

MUSKEGON MUSEUM OF ART ANNUAL REPORT



**2020
2021**

OUR MISSION

The Muskegon Museum of Art, founded on a tradition of aesthetic excellence, is committed to fostering the life-long study and appreciation of the visual arts by strengthening, preserving, and exhibiting its collections; offering a wide range of traditional and contemporary exhibitions; stimulating learning and creativity through diverse public and educational programming; and enhancing community involvement and support in a safe, accessible, and welcoming environment.



Photo by Frederic Reinecke/FAR Photography

The Muskegon Museum of Art, in concurrence with the International Council of Museums' definition of a museum, is a permanent institution that is dedicated to the service of society and its development; is open and accessible to the public; and acquires, conserves, researches, communicates, and exhibits, for the purpose of study, education, and enjoyment, material evidence of humanity and its environment.

The Muskegon Museum of Art has been continuously accredited by the American Alliance of Museums since 1989.

FRONT

Adam Avery (American Ojibwe, born 1973)
Beaded Top Hat, appliqué beadwork on felt hat, 2020
Museum purchase, through the gift of Diane Hallberg
in memory of her brother, Douglas M. Snow, by
exchange. 2021.4

DIRECTOR'S MESSAGE



This Annual Report covers the MMA's fiscal year from July 1, 2020 through June 30, 2021. During this time, the MMA presented an ambitious 21 exhibitions—all but one were organized by the MMA staff—including a stunning exhibition of permanent collection glass, a contemporary Anishinaabe show in conjunction with Grand Valley State University Art Gallery, and a summer showcasing women artists headlined by the second incarnation of The Bennett Prize®.

One noticeable difference from previous years was the lack of in-person programs and events due to COVID-19 restrictions. In response, a great deal of quality content was generated by the MMA staff and delivered digitally. The MMA staff continues to be one of the hardest working and innovative museum staffs around.

Where we could, we reimagined MMA events such as transforming the Festival of Trees into the Festival of Wreaths and taking it to the storefronts of Downtown Muskegon.

In March, we held our long-awaited announcement of the Museum Expansion outdoors beside the museum. Throughout the past year, our Campaign Cabinet, Trustees, and staff worked diligently toward completion of the MMA's *Shaping the Future* Capital Campaign for Museum Expansion to which circumstances of COVID-19 created an additional challenge.

Finally, none of this would have been possible without your support. From the campaign, membership, sponsorship, donations, event support, and gifts, your support enabled this art museum to finish the year strong.

In the coming years you will see great things happening at the MMA. We are so glad you are on this journey with us!

Sincerely,

Kirk Hallman, Executive Director

Program support is provided the Michigan Council for Arts and Cultural Affairs, an affiliate of the National Endowment for the Arts; and the Michigan Humanities council, an affiliate of the National Endowment for the Humanities.



CHAIR'S MESSAGE

On behalf of the Museum's Foundation Trustees I would like to thank our members, sponsors, contributors, exhibitors, visitors and staff for their continued and enthusiastic support during the past trying year. Despite the COVID-19 disruption, being closed for several months and suffering through limited attendance, the MMA has survived. The Trustees and staff are looking forward to a thriving new year with significant new exhibitions, programs and a return to normal. While this year has not been normal, it has been successful. Looking forward, the schedule of exhibitions is incredible. Further, the plan is to bring the Capital Campaign for expansion to a close and break ground next year. Financially, our year ended successfully and our plan for next is to conservatively manage resources while expanding membership and underwriting.

Sincerely,

Frank Bednarek, Chair
Muskegon Museum of Art Foundation Board



*This Annual Report is dedicated
to the memory of
Muskegon Museum of Art Foundation Trustee
Carol R. Folkert.*

MMA FOUNDATION BOARD 2020-2021

Frank Bednarek, Chair
Kimberly Van Kampen, Vice Chair
Claudia Berry, Secretary
John Pridnia, Treasurer
Nancy Crandall
Gayle R. Davis
Tom DeVoursney
Robert A. Dubault
Trip Johnson
Michael Olthoff
Eric Ringelberg
Gil Segovia
John Swanson
Jonathan Wilson
Chris Witham

MMA STAFF

Kirk Hallman, Executive Director
Catherine Mott, Assistant Director
Val Anderson, Membership Assistant
Dee Arnold-Johnson, Head Custodian
Sam Booker, Security
Lee Brown, Preparator
Lauren Butkevich, Store Associate
Judy Canfield, Store Associate
Lonnie Clark, Custodian
Victoria Clifford, Store Associate
Marguerite Curran, Director of Marketing
Cathleen Dubault, House Manager
Greg Frye, Security
Paul Gallagher, Security
Brian Haskins, Security
Decynthia Hatcher, Store Associate
Kelli Hepler, Executive Assistant
Leanne Johnson, Event Assistance
Shawnee Larabee, Accounting Manager
Art Martin, Director of Collections & Exhibitions/Senior Curator
Kelly Mavis, Museum Store Manager
Ann McLaughlin, Store Associate
James Milostan, Collections Manager
Kathleen Parker, Store Associate/Consignment Buyer
Heather Placko, Curator of Education
Tammy Tolar, Event Assistance
Richard Vallier, Security

EXHIBITIONS

During the past fiscal year, The Muskegon Museum of art presented 21 temporary exhibitions. All but one were organized and developed by the MMA. Three major exhibitions featured Michigan artists. Because of COVID-19, we were unable to present the *Michigan Contemporary Art Exhibition* but with safety restrictions in place, the MMA galleries were able to remain open throughout the entire fiscal year.



Wally Dion; *Evening Star, Morning Star*; mixed media; photo by Katie Kanazawich

SUMMER 2020

A suite of summer exhibitions titled *Shaping the Future, Celebrating the Past* showcased the permanent collection of the Muskegon Museum of Art. The star attraction was a major show of studio glass from the MMA's collection in the Walker A Gallery. *Glass Treasures from the Permanent Collection* was an immersive experience in both light and sound. *Pictures of the Best Kind* in the Cannon Gallery showed off favorites from the permanent collection. *From Dürer to Rembrandt: Five Centuries of Art and Faith* displayed works from the MMA's stunning print collection and *Graphic: 19th & 20th Century Prints and Watercolors* took this subject matter of works on paper to the golden age of printmaking. *The Artist's Lens* exhibited the MMA's growing photography collection and *A Living Legacy* highlighted the MMA's ongoing commitment to living artists. *The Arts of Japan* displayed the MMA's rarely seen collection of Japanese wood block prints and decorative objects.

FALL 2020

Fall 2020 saw the MMA highlighting Michigan artist Russell Prather, whose installations create multi-layered artworks from Mylar and paint that shift in form from the viewer's perspective.

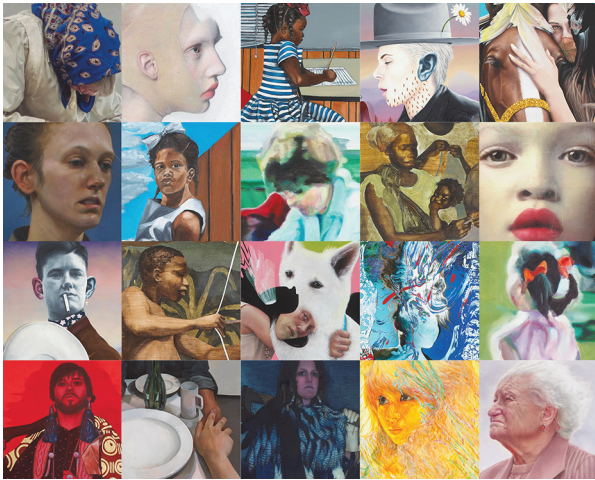
We were able to present a delayed *Postcard Salon*, showcasing the amazing creativity of our local community in a safe and fun environment. The summer's permanent collection exhibitions were held over throughout the fall.

WINTER 2020-2021

During the winter, we partnered with the Grand Valley State University Art Gallery to present *The Art of the People: Contemporary Anishinaabe Artists* featuring nationally recognized and early career Native American Artists. This show was guest curated by sculptor Jason Quigno and appeared concurrently at both the MMA and GVSU Galleries. Accompanying *Art of the People* was an exhibition by award winning Anishinaabe artist Jim Denomie, *Challenging the Narrative*, which displayed his colorful, humorous paintings that directly address historical, political, and cultural issues facing Native Americans. Levi Rickert, publisher of *Native News Online* and of the Prairie Band Potawatomi Nation, documented his journey to Standing Rock in 2016 with *Standing Rock: Photographs of an Indigenous Movement*.

The Walker Family Legacy highlighted the extraordinary and museum-defining gifts of artwork made to the MMA over more than 80 years. Friends of Art's 100th Anniversary was celebrated with an exhibition of their gifts of artwork to the MMA over the decades.

Our Voice: Celebrating the Coretta Scott King Book Awards featured artworks from past winners including Kadir Nelson, Bryan Collier, Nancy DeVard, and many others. This exhibition was accompanied by *The Art of Making: Sculpture and Fiber from the Permanent Collection of the MMA*.



The Bennett Prize® 2 Finalists, artwork details

SPRING 2021

After a virtual exhibition of *Expressions* in 2020 and COVID-19 preventing a new show in 2021, we partnered with the Muskegon Area Intermediate School District to present *Expressions Revisited*. The show featured artworks that were purchased from previous *Expressions* student exhibitions by the MAISD and are now part of their collection.

Rising Voices 2: The Bennett Prize for Women Figurative Realist Painters opened May 27, with an event limited just to the finalists because of restrictions. This exhibition is held in conjunction with The Bennett Prize®, a stipend/grant-in-aid program established by American art collectors Steve Alan Bennett and Dr. Elaine Melotti Schmidt. The \$50,000 Bennett Prize® is awarded biennially to a woman fine art painter whose principal artistic focus is in figurative painting in a primarily realistic style. This year's prize winner was Ayana Ross from McDonough, Georgia. Ross will present a solo show at the MMA in 2023. The Bennett Prize® winner from 2021, Aneka Ingold presented her solo show, *Transfiguration*.

Keeping with this theme, the MMA's summer exhibitions focused on women artists. *Beyond the Ceiling: Women of Studio Glass* celebrated the contribution of women glass artists to the international studio glass movement with pieces from the MMA's permanent collection and Habatat Galleries. *Women at the Forefront: Stories from the Permanent Collection* highlighted women artists from the MMA's permanent collection.

THANK YOU, EXHIBITION UNDERWRITERS

Our exhibitions and programming would not be possible without the underwriting of our 2020-2021 sponsors. Through their generosity, we continue to bring to our West Michigan audiences (and beyond!) new perspectives and amazing visual art. Thank you to:



Muskegon County



LORIN

THE MEIJER FOUNDATION



RAYMOND JAMES®



FOLKERT FAMILY FOUNDATION

THE HILT FOUNDATION

FRANK & SUSAN BEDNAREK

DON & NANCY CRANDALL

TIM & ANNE ERICKSON

FLOYD & CARON FARMER

PATRICIA FLYNN

SHIRLEY GOSSETT

THE HILT FOUNDATION

STEVEN & CAROLINE MAYBERRY

PATRICK O'LEARY

GARRY & CHARLOTTE OLSON

VANCE & DEBORAH SMITH

MICHAEL & PAT WADE

EDUCATION

Although we did not have in-person educational programming in 2020-2021, we certainly made up for it with our virtual offerings and community outreach.



Virtual Tours



#meetattheminoaur
Minotaur Reading by Beth Carter

SUPER SATURDAYS

All of the Super Saturdays pivoted to being offered in a digital format, complete with activities, suggested films, and free admission to see the MMA galleries. The virtual Super Saturdays were promoted with their own hashtag, #SSFromHome.

DIGITAL PROGRAMMING

Chalk it Up! was a digital call to action for some of our youngest visitors. We invited them to pick up free bags of chalk from the MMA and document some of their creations at home. Another digital engagement was #meetattheminoaur; visitors were encouraged to take a selfie with the sculpture *Minotaur Reading*, a new addition to the MMA collection.

TOURS

A brand new collection of virtual tours was launched for all ages, K-12 and college levels. With the virtual format, educators and the community had access to tour the MMA whenever they wanted.

MMA ARTISTS CHATS

Without the opportunity to invite the public in for artists' lectures, we created a series of artist's interviews that provided great insight into a number of the exhibitions that were highlighted in 2020-21 season. A total of four interviews included artists Russell Prather, Jim Denomie, Levi Rickert, and guest curator/artist Jason Quigno.

ORIGAMI CORNER BOOKMARK

Step one: Cut the paper into a square.

Step two: Scan the QR code below, and follow Red Ted Art's folding instructions.

Step three: Get creative with decorating your bookmark using markers, crayons, and more!



#ssfromhome art activity

COMMUNITY PARTNERS

In the fall of 2020, we supplied Kids Food Basket with MMA coloring sheets to be included in the meals distributed to the community. During the run of the *Our Voice: Celebrating Coretta Scott King Book Awards* exhibition in the spring of 2021, we partnered with Dads on Deck to video record three Dads reading their favorite CSK books and launched the recordings on our YouTube channel for everyone to enjoy.

DOCENTS

The MMA docent group completed a comprehensive on-line course covering Tonalism paired with the reading of the book *The Unknown Night* by Glyn Vincent that covered the life and art of Ralph Blakelock. They kept active online and patiently waited out COVID-19 restrictions for tours to resume.

CONNECTING THROUGH ART

We also recognized that a large portion of the most vulnerable community members were missing out on the MMA, so we delivered Connecting Through Art Care Packages to area elder care facilities. Packages included a selection of reprinted images from the MMA's permanent collection, coloring pages, and a puzzle of one of the MMA's works of art. Connecting Through Art is underwritten by Mercy Health and Sytsema Funeral & Cremation Services.



Many of the educational programs were supported by two major partners, Howmet Aerospace and the Bridge Ahead Initiative supported by Art Bridges.



Virtual story time episode featuring Dads on Deck member Norman Young reading *Josephine* written by Patricia Hruby and illustrated by Christian Robinson.



Daniel Clayman
Clear Volume, cast glass, assembled 2020
Gift of the Robert D. and C. Corcoran Tuttle
Family in honor of the 100th Anniversary of
the Muskegon Museum of Art
2011.22
Photo by Jennifer Green Photography

COLLECTIONS REPORT

The character and quality of the Muskegon Museum of Art's permanent collection is one of our most defining characteristics, a point of pride to our community and a never ending surprise to first time guests. Through generous gifts and the strategic use of our collecting funds we continue to build on this legacy, expanding around our existing strengths of the past and acquiring artworks that speak to present day generations and shape the future of the institution.

Jim Denomie (American Ojibwe, b. 1955)
Untruthful, oil on canvas, 2014
Museum Purchase, through the gifts of Robert and Sylvia Kaufman, the Estate of Robert "Paul" & Marjorie McConaughy, Dr. and Mrs. Secundino R. Veiga, and others, by exchange 2021.6



John Miller (American, b. 1966)

L-R:

Curly Fries, hot sculpted glass and metal, 2020
2020.9a-m

CB w/ LTBP (Cheeseburger with Lettuce, Tomato, Bacon, Pickle), blown and assembled glass, 2020
2020.4

Fountain, blown and hot sculpted glass, 2020
2020.8a-h

Museum purchases, through the gift of the Margaret "Peggie" Stone Estate



GIFTS

Direct gifts continue to be a major way we expand our holdings. Through the generosity of collectors seeking a public home for their artworks, we are able to acquire a diverse mix of objects that we might otherwise be unable to pursue. In fiscal 2020-2021, longtime museum supporters joined new donors in gifting works of art from their own collections. From John and Linda Hilt came an untitled studio glass piece by James Nowak; Rich Nelson gifted a color aquatint by Manuel Robbe; Beth Mathews donated the print *The Last Supper* by Sadao Watanabe in honor of her parents, Donald and Grace Mathews; John and Jessie Martin gifted two landscapes by Muskegon artist Wilfrid Berg, a winter landscape by Jon McDonald, and an oil on canvas, *Junipers*, by Russell Chatham; Roger and Nancy Clouse gave two intaglio prints by Holland artist Bruce McCombs, *Bridge* and *August 18, 1909*; Ruth Kjaer and the Kohler Foundation, Inc. gifted two paintings by John Nicholson Colt; and from Richard and Mary Straub came *Reverie* and *Soliloquy*, two of Reynold Henry Weidenaar's best known mezzotint prints.

APPRECIATION

Special thanks to the donors that made the acquisition of these artworks possible and to the **Collections Committee**, a body of volunteers that works closely with curatorial staff to shape the direction of our collection:

Robert Dubault, Chair
Billie Bruce
Janet Day
Keith Downie
Betsy Jellema
Brian Lang
Marian Michalski
Mike Olthoff
Jan Witt



Maurice Brazil Prendergast (American, born Canada, 1858-1924)
Sunday in the Park, oil on panel, c. 1910-13
 Museum Purchase, Gift of the L.C. and Margaret Walker Fund
 2021.1

PURCHASES

Through art fund proceeds and financial gifts, the museum was able to purchase both historic and contemporary artworks, several from our own MMA organized exhibitions. Expanding our collection of studio glass we acquired, through a gift of the Margaret “Peggie” Stone Estate, a “value meal” by artist John Miller: a larger than life cheeseburger accompanied by curly fries and a soda, all executed in glass. Through the proceeds of the L.C. and Margaret Walker Fund we purchased *Steel Mill Homes (Blast Furnace)* by Charles Burchfield. Dated 1919, the work represents one of the artist’s earliest forays into a more Regionalist style and subject matter. Also through the Walker Fund came *Sunday in the Park*, an oil on panel by Maurice Brazil Prendergast, a leading American artist of the early 20th century.

In the winter of 2020-21, the MMA organized two exhibitions of the art of contemporary Native American artists, *Jim Denomie: Challenging the Narrative* and, in partnership with guest curator Jason Quigno and the Grand Valley State University Art Gallery, *The Art of the People: Contemporary Anishinaabe Artists*. With gifts from Diane Hallberg in memory of her brother, Douglas M. Snow by exchange; gifts of Steve Knoll and Knoll Inc., and Mary E. Morrell in memory of Mr. and Mrs. George Morrell by exchange; and the gifts of Robert and Sylvia Kaufman, the Estate of Robert “Paul” & Marjorie McConaughy, Dr. and Mrs. Secundino R. Veiga, and others, by exchange, we purchased three works of art from these shows: Adam Avery’s *Beaded Top Hat*, Jonathan Thunder’s *Quarantine at Gramma’s House*, and Jim Denomie’s *Untruthful*.

Jonathan Thunder (American Ojibwe, b. 1977)
Quarantine at Gramma’s House, acrylic on canvas, 2020
 Museum purchase, through the gifts of Steve Knoll, Knoll Inc., Mary E. Morrell in memory of Mr. and Mrs. George Morrell, and others, by exchange
 2021.5



SUPPORT

EDWARD HOPPER SOCIETY

GIFTS

CAPITAL CAMPAIGN DONORS

LEGACY GIVING

MEMBERS

FUNDRAISING EVENTS

To sustain operations, the Muskegon Museum of Art must raise \$700,000 each year through the underwriting of exhibitions, special events, and programming, as well as through membership and gifts.

Thank you for your support!



THE EDWARD HOPPER SOCIETY DONOR RECEPTION IS UNDERWRITTEN BY



THE EDWARD HOPPER SOCIETY

The Edward Hopper Society is a recognition program for donors who give \$2,500 or more during the year or were donors to INSPIRE at the \$10,000 level or above. Society members are invited to an exclusive reception in their honor each year. For further information, please contact Kirk Hallman at 231.720.2573.

Corporations / Foundations

ADAC Automotive
AGS Company
Elmer L. & Eleanor J. Andersen Foundation
Arconic
The Bold Companies
The Cannon Family
Comerica Bank
Community Foundation for Muskegon County (CFFMC)
DTE Energy Foundation
Fifth Third Bank
Folkert Family Foundation
Frey Foundation
Grand Haven Area Community Foundation
Harbor Steel
The Hilt Foundation
Hines Corporation
Hooker DeJong, Inc.
Howmet Aerospace Foundation
Huntington Bank
JSJ Foundation
Lorin Industries, Inc.
Loutit Foundation
Marian A. & Ruth K. Sherwood Family Fund
Mart Dock/Aquastar
Meijer, Inc.
The Meijer Foundation
Mercy Health
Motion Dynamics Corporation
Muskegon Area Intermediate School District
Nichols
Northern Machine Tool
Northern Trust Bank
Olsen Family Fund - CFFMC
Patrick J. O'Leary Foundation - Fidelity Charity Gift Fund
Paul C. Johnson Foundation
PNC Bank
Port City Ventures
Rehmann
Robert D. & C. Corcoran Tuttle Fund - CFFMC
Shaw & Betty Walker Foundation
Swanson Pickle Company
Van Kampen Boyer Molinari Foundation
Warner Norcross + Judd LLP
West Shore Urology, PLC
White Lake Lothmann Family Fund

Individuals

Marilyn Andersen
Curtis Atkisson
William Baldrige
Stuart & Sherry Becker
Frank & Susan Bednarek
Bernie & Cathy Bertson
Jon & Jane Blyth
James W. F. & Donna K. Brooks
Dana Bryant & Claudia Kerr Bryant
Darlene Collet
John Cook & Jane Leonard
Donald & Nancy Crandall
Lowell & Nell Dana
Janet Day
Edgar A. DeJong & Diane Van Wesep
Jan Deur
Tom DeVoursney
Pat & Julie Donahue
Valerie P. Eggert
Floyd & Caron Farmer
Mark & Christine Fazakerley
Dorothy C. Fisher
Frances F. Fisher
Patricia Flynn
Barbara Fugazzoto
Mike & Bonnie Gluhanich
Shirley Gossett
Kimberly L. Hammond
Judy Hayner & Char Romanosky
Matt & Amy Heisser
Larry & Roxanna Herder
Larry & Lari Hines
Dorothy A. Johnson
Erick & Holly Johnson
Trip & Nina Johnson
Charles E. Johnson II & Vivian Keene Johnson
Robert & Wendy Kersman
Roger & Jeanne Knop
Jim & Betty Korbecki
Frederic Kraft & Gayle Davis
Dan & Sheryl Kuznar
Brian & Jamie Lang
Larry & Lynne Larsen
Jane Leonard
Joan Majeski
John & Jessie Martin
Jack H. Miller
Daniel & Sharon Moody
Thomas & Suzanne Munroe
Mark & Elizabeth Murray
Patrick O'Leary
Steve & Deb Olsen
Michael & Kay Olthoff
Richard W. & Nancy Peters

Margaret Potter
Paul & Evelyn Reid
Don & Jane Rohlck
Patricia Roy
Jean Scales Pataky
Michael & Debbie Schubert
Linda Shores & R. Michael Snodgrass
Roger & Jan Spoelman
Don & Jane Tjarksen
Peter Turner
John Tuttle
Julia Tuttle
Thomas & Elizabeth Tuttle
Judith M. Van Kampen
Kimberly Van Kampen
Anthony & Monica Verplank
Michael & Patricia Wade
Mrs. Shaw Walker
Jim & Susan Westgate
Judy Wilcox
Kenneth & Marguerite Winter
Chris & Stephanie Witham
Richard & Marilyn Witham
Jan Witt
Michael & Martha Youngdahl
Sara Youngman
Anonymous

GIFTS

CORPORATE & FOUNDATION

\$20,000+

DTE
Harbor Steel & Supply Corporation
Hines Corporation
The Meijer Foundation

\$10,000+

JSJ Foundation
Nichols
Patrick J. O'Leary Foundation-Fidelity Charity Gift Fund
Raymond James & Associates

\$5,000+

EMBARC Financial Partners
Bonnie Olson Memorial Fund
PNC Bank
Shape Corporation
Susan and Frank Bednarek Fund-CFFMC
Swanson Pickle Co.
Verplank Donor Advised Fund

\$1,000+

Benevity Community Impact Fund
Blyth Family Fund of the CFFMC
The Brooks Family Community Foundation Holland/Zeeland
Core Realty Partners
Grand Valley State University
Phyllis & David Laurin Fund-CFFMC
Robert B. & Betty M. Morrison Designated Fund-CFFMC
Charles Stewart Mott Foundation
Muskegon Surgical Assoc.- Pure Medical Spa
Neal/McGuigan Family Fund CFFMC
Newkirk Electric Associates Inc.
Theodore & Joan Operhall Fund
Shoreline Insurance Agency, Inc.
Swanson Grading & Brining Inc.
Warner Norcross + Judd LLP
Webb Chemical & Trace Labs
Thelma & Paul Wiener Fund for the Arts-CFFMC
Whittemore Family
William G. & Phyllis K. Wood Fund

Under \$999

B & D Lawncare
Baker College
Bandstra Studios
Belasco Electric Co. Inc.
Anna S. Berg & Linnea Berg Jensen Fund-CFFMC
Brown Family Fund
Bertie & Susan Butts Family Fund
The Cheese Lady
Clock Life Story Funeral Homes/Phoenix Crematory
Custom Cove Carpet & Tile
Dobry Law Offices, PLC
Downtown Muskegon Now
Dykstra Landscape
Dynamic Conveyor Corporation
Eagle Alloy Inc.
Eaton Matching Gifts Program
Mary Lou & Bill Eyke Charitable Fund
Family Financial Credit Union
Fred & Char Franczek Fund of CFFMC
G & L Chili Dogs
Graphics House
Hazekamp Premier Foods
Hearthstone Bistro
Jean C. & Alex H. Homberger Fund-CFFMC
Huntington Bank
Jacki's Aerobic Dance
Jackson-Merkey Contractors, Inc.
The Joel & Kathie Jarvis Charitable Fund
John Grace Construction
Kendall Investment Group/ UBS Financial Service
Lefleur Shoppe
Light Corp Foundation Fund
Little Learners Preschool Fund-CFFMC
Lurie Family Charitable Fund
Mart Dock
Meijer
MMA Friends of Art
Muskegon Lakeshore Chamber of Commerce
Muskegon Pediatrics PLC
Network for Good
No More Sidelines
PayPal Giving Fund
Pliant Plastics Corporation
Poetry Society of Michigan
Production Fabricators Inc.
Quality Tool & Stamping Company, Inc.
Ramos & Son's Body Shop LLC
Ramos Towing

John & Alicia Schaub Family
Schierholz/Hogan Family Fund
Dirk Stone Real Estate Group
Suarez/Polakis Family Fund-Fidelity
Swenson Family Fund-CFFMC
Talons Out Honor Flight
Timber Run Associates, LLC
Tridonn Development Co.
UBS
Uptown Hair
Kyle & Samantha Verplank Family Fund
The John D. & Karen L. Wells Charitable Gift Fund
WinBerg Construction
Zwemer Surgical, PLC

INDIVIDUAL

\$10,000+

Buzz & Wendy Kersman

\$5,000+

Judith Hayner, HCMS LLC & Char Romanosky
Peter Turner

\$1,000+

Steven Bennett & Dr. Elaine Melotti Schmidt
Bernie & Cathy Berntson
Deborah DeVoursney
Carole DeYoung
Robert & Cathleen Dubault
Darcy J. Dye
Jackie Engel, CFP®
Floyd & Caron Farmer
Robert & Sue Fles, Jr.
Patricia Flynn
Kimberly Hammond
Steve & Deb Jackson
Erick & Holly Johnson
Charles & Vivian Johnson II
Roger & Jeanne Knop
Betty Korbecki
Dan & Sheryl Kuznar
Adam Lutynski
John & Jessie Martin
Jack H. Miller
Mark & Elizabeth Murray
Steve & Deb Olsen
David & Suzanne Selim
Jack & Becky Slimko
F. Remington & Ginny Sprague
Tim & Jane Stoepker
David & Linda Taylor
Donald & Jane Tjarksen
Judith M. Van Kampen
Michael & Patricia Wade
Kenneth & Marguerite Winter

\$500 +

Frank & Susan Bednarek
John & Claudia Berry
Jeff & Kim Burr
Herb & Karen Driver
Leonard & Cathy Drust
Corrinne Erickson-Strand
Charles & Patricia Fisher
Carl & Carolyn Gebuhr
James & Susan Geisler
John & Linda Hilt
Mary Lou Maher
Steven & Caroline Mayberry
Denis & Barbara Potuznik
John & Linda Riepma
Ed & Pat Schroeder
Karen Shields
Ted & Judy Stojak
Ronald & Lynn Stroup
Mary B. Towner
Tom & Liz Trzaska
Kathleen West
Warren & Arlene Wickland
Jon & Catherine Workman

Under \$499

Mary M. Appelt
Daniel L. Achterhoff & Bonnie Hendrick
Ross & Sandra Aden
Helen Allshouse
Alan & Anna Alpert
Charles & Gloria Alstrom
Tom & Kay Anderson
Dee Arnold-Johnson
Margo Atwell
Jason Balavitch
David Baldrige
William J. Baldrige
Mariann Barnard
Lisa Bayne
Gary & Carol Beatty
Dorothy Bennink
Luther & Helen Berntson
Donald Bjorkquist
Isabel Blake-Evans
Darlene Blasing
Gordon Boardman
Brian & Jill Boersema
Sharon Boersma
Linda Boeskool & Rob Shinn
Randy & Karen Booth
Matthew & Judy Bosma
John & Andrea Bowyer
Dwanna Brink
Dan & Michele Buckley
Gordon & Mary Buitendorp
Robert & Beth Burns
Manuel & Barbara Butzow
Amy Cammell
Beth Carrozza
Curtis Chambers
Robert & Charlotte Chessman
Norma Clack
Mark & Kristina Clark

John & JoAnne Clickner
Victoria Clifford
Jon Colburn
Darlene Collet
Mary Fran Collier
Jan Conn
John Cook
James & Diana Cornell
Don Correll
Tony & Sue Cortese
C. William Crain
Orville & Susan Crain
Sharon Crain
Deborah Crittenden
William & Carol Cross III
Marguerite Curran
Adam Dahlstrom & Codi Westendorf
Allan & Anne Dake
Steven & Darleen Dangel
Larry & Maggie Dannemiller
Howard & Thea Datema
Edgar DeJong & Diane Van Wesepe
Roni Devlin
Dianne DeYoung
Eleanor DeYoung
Richard Didrickson
Tracy Dobson
Michael & Nancy Dodge
Kathleen Dorato
Gary & Lynn Doublestein
Keith Downie & Katherine Bourdon
Gretchen Dunfee
James Edmonson
Joel & Linda Engel
Tim & Anne Erickson
Donna Esch
Jaymie Estlick
Wallace & Jane Ewing
Bill & Mary Lou Eyke
Brian & Nancy Falony
Jill Farkas & Scott Majetich
Tom & Carolyn Fehsenfeld
Eugene Fethke
Carol Feyen
Fran Fisher
Robert & Fleischmann
Peggy Flora
Teresa Folkmier
Ken & Barbara Foster
Scott & Adrienne Frasier
William & Patricia Fritz
Kathy Galarneau
Jeffrey Gates
Katherine Gietzen
Rita Gilbert
Arthur & Mary Ann Golin
George Goodman
Lynne Gordon
Jordan Gosselin
Sheila Grant
Terry & Janet Grevious
Robert & Eileen Grunstra
LaDon Gustafson
Daniel Hamblin

LEGACY GIVING

A gift of inspiration is no small matter. Legacy giving is the simplest and most effective way to give and can be accomplished in a variety of ways. Simply call us regarding your desire, and we will make arrangements accordingly. For more information on Legacy Giving, contact Kirk Hallman, Executive Director, at 231.720.2573.

MEMBERS

SECOND CENTURY LEGACY SOCIETY

Roger & Marilyn Andersen
Stuart & Sherry Becker
Frank & Susan Bednarek
Jon & Jane Blyth
Dr. Dana & Claudia Bryant
John & Ruth Elizabeth Cook
Dr. Don & Nancy Crandall
Robert & Cathleen Dubault
Barbara Fugazzotto
Ron & Shirley Gossett
Judith Hayner
Larry & Lari Hines
Charles & Patricia Johnson
Trip & Nina Johnson
James & Betty Korbecki
Larry & Lynne Larsen
Joan Majeski
John & Jessie Martin
Michael & Kay Olthoff
Paul & Dr. Patti Roy
Linda Shores & Michael Snodgrass
Kimberly Van Kampen
Michael & Patricia Wade Foundation
Shaw & Betty Walker
Sara Youngman
André Aerne by Estate
Bess Commodore by Estate
George Hilt by Estate
Felrath Hines by Estate
Alex Homberger by Estate
Donald & Sarah Johnson by Estate
Gary & Kay Ostrom by Estate
Robert D. & C. Corcoran Tuttle by Estate
Gary & Victoria Verplank by Estate

GIFTS, *cont...*

Richard E. & Diane M. Harder
Carolyn Heckle
James & Julie Hegedus
Judy Hegedus
Steve & Colette Heneveld
Kelli Hepler & Michael G. Karp
Larry & Roxanna Herder
Charles & Sarah Hermanson
Rena Hesselink
Neil Heyen
Greg & Debi Hillebrand
Raymond & Jackie Hilt
Annette Hilton
Kirk Hochhuth
Roger & Paula Hoffman
Stephen & Margaret Hoffman
Bruce Hood
Susan Horsfall
Charles & Susan Huttula
Anne E. Jellema
Jon & Betsy Jellema
Nina Johnson
Bari Johnson
Juanita R. Joiner
Mary C. Jones
John & Lesa Jordan
Diane Kaczmarek
Morton Kantor
Pamela Kearney
Mark & Kris Kelley
Kris Kelley
Bonnie Kellogg
Sarah Jo Kenrick
Brian & Julie King
Roberta King & Mike Miesch
Gloria Klinger
Tom Knight
Marc & Colleen Kole
Kent & Charlotte Krive
Kathy Kuharevicz
Barbara Kutches
Suzanne Lack
Paul & Patricia Ladas
Joan LaMourie
Jerry & Alison Lang
Mark A. & Karla Lange
Norm & Linda Langlois
Duane A. Leet
Jane E. Leonard
James & Elizabeth Broadrup Lieberman
Valerie L. Lindeman
Penelope Loeb
Dan & Nancy Lori
TL & Karen Lowe
Allan & Barbara Lowe III
Jerry & Marge Lundeen
Ray & Marcia Lundeen
Mei Mah
Dennis & Marla Major
James & Mary Malek
Joseph Manhart
Deborah Margules
Cynthia Mazurek
Bob & Sue Ellen McCreary
Joseph McDaniel
Susan Meston
Paul & Diane Meyers
Tim & Marian Michalski
John & LaShelle S. Mikesell
Roger Missimer
Dan Moody
Mat & Carol Moore
Jared & Cathy Mott
Boyd & Brenda Mueller
Neil & Diane Mullally
Kristi Nagengast
Linda Noble
Mary O'Brien
Dan & Mary Ellen O'Keefe
Garry & Charlotte Olson
Mike & Kay Olthoff
Henry & Sharon Ottens
Merilee Otto
Robert & Mary Ann Page
Kathleen Parker
Steve & Molly Parker
Thomas Pascoe & Jean Stein
Tom & Susan Peeples
Sharon Pell
'Nita Pellegrom
Veronica Petty & Steve Bawks
Ed Polakis & Kim Suarez
Julie Poppen
Leila Poppen Reynolds
Tom Rabach
Paul & Brenda Raphaelian
Julie A. Reenders
Jane E. Reens
Susan Rehrer
Sharon Reimink
Evan & Lois Reinders
Frank & Tammy Reuwer
John & Diane Revitte
Wendy Rice
Suzanne Richards
James & Debra Rinck
Dan & Sarah Rinsema-Sybenga
Patricia Robinson
David L. Roodvoets
Craig & Traci Rozelle
Marilyn Ryan
John & Marie Rycenga
James Rynberg
John & Billie Jo Schilbe
Robert & Marcia Schneeberger
Eugene A. & Faith Schoon
Benedict & Marilyn Schramski, Jr.
Mike Schubert
Joanne Schwalm
Debra M. Sechen
Loretta Sheehan
Peter & Janice Shireman
Vanessa Sias, Penny Loeb, Farr Hinton
Jim & Sheryl Siegel
Joel & Arlene Siegel
Patty Siewert
William & Kathy Slinger
Peter & Regina Sjoberg
Joan Smith
Barbara Smith
John & Kathleen Snider II
Vinka Soljan
Thomas & Lynne Spencer
Leslie Sprott
Ellen Sprouls
Deanne Stebelton
Dennis W. Stepke
Teresa Stevens
Joan Stewart
Eileen B. Stoffan
Kevin & Therese Stone
Janice L. Stone
Nancy Strait
Linda Strong
Susan Struck
Frank Sundquist
Michael & Carol Sutton
John & Susan Sytsema
Rachel Sze
Cindy Taylor
Peter & Judy Theune
Al & Kim Thigpen
Tom & Elizabeth Tindall
Jane Toot
Tim Trainor & Diane Krasnewich
Charles & Susan Tufts
Baomin Twu & Yvonne Chern
Kathi Tyler & Tom Schultz
Lynne Unger
Dale & Barb Valentine
Constance Vallier
Barbara VanHeest
Laura Sue VanHoesen
Lesla VanSingel
Janice Veenstra
Victoria Veenstra
Walter & Elsa Verderber
Connie (Clarellen) Verdoni
Gretchen Vinnedge
Kyle Vohlken
Vilas & Shanti Wagle
Kenneth & Kay Walcott
Gary Walker
Mark & Erin Walling
Brian & Debra Walters
Steve & Carol White
Eleanor Williams
Jonathan & Melissa Wilson
Sandra Winger
Catherine Wiseman
Jan Witt
Roque & Vickie Ybarra
Amy Young
Dorothy Young
Thomas Zant
Jim & Linda Zolman
Anonymous

SHAPING THE FUTURE

MUSEUM EXPANSION CAMPAIGN CONTRIBUTORS

Founder (\$1,500,000+)

Steven Alan Bennett &
Dr. Elaine Melotti Schmidt

Leadership (\$1,000,000+)

Van Kampen Boyer
Molinari Foundation

Platinum (\$500,000+)

Folkert Family in Memory
of Carol R. Folkert
The Hilt Foundation
Patrick O'Leary & Karen
Yamasaki
Brad & Kathleen Playford
Shape Corp. in Memory of
Gary & Victoria Verplank
Mrs. Shaw Walker

Gold (\$250,000+)

Community Foundation for
Muskegon County (CFFMC)
The Frey Foundation
Hines Corporation
(Challenge Match)
Howmet Aerospace
Foundation

Silver (\$100,000+)

Andy & Nancy Busard in
Memory of Drs. J. Max &
Mary Ellen Busard
The Susan & Frank
Bednarek Fund of the
CFFMC
Thomas F. DeVoursney
Mark & Christine
Fazakerley
Grand Haven Area
Community Foundation
(GHACF)
Paul C. Johnson Foundation
of the CFFMC
Buzz & Wendy Kersman
The Meijer Foundation
Muskegon Public Schools
Mike & Kay Olthoff
Thomas & Elizabeth Tuttle
& Julie Tuttle
Gary & Victoria Verplank
Estate
Shaw & Betty Walker
Foundation
Warner Norcross + Judd
LLP
Richard & Marilyn Witham

Bronze (\$50,000+)

Dr. Frederick & Deborah
Brown Estate
Consumers Energy
Foundation
Robert D. & C. Corcoran
Tuttle Fund

Steve & Deb Jackson
Family Fund of the CFFMC
Michigan Council for Arts
& Cultural Affairs
Sally A. Peterson
Webb Chemical Service
Corporation

Legacy (\$25,000+)

William J. Baldrige in
Memory of Luanne
Baldrige
Allen & Sandy Beck
Jon & Jane Blyth
Dr. Donald & Nancy
Crandall
Robert & Cathleen Dubaut
Caron & Floyd Farmer
Judith Hayner & Char
Romanosky in Honor of
the MMA Foundation
Trustees, 1984 - Present
Dave & Julie Hazekamp
F. Martin & Dorothy A.
Johnson Family Fund of
the GHACF in Honor of
Sarah B. Johnson
Trip & Nina Johnson
Dan & Sheryl Kuznar
John & Jessie Martin
Steve & Deb Olsen
Sally A. Peterson
Marge Potter
Mary Price & Tom Schaub
Jack & Becky Slimko
Jane & Don Tjarksen
John & Mary Swanson
The Chris Witham Family
Fund

Patron (\$10,000+)

Ted & Francine Anton
Kenneth Bandstra
John & Claudia Berry
Cannon Family Foundation
Orville & Susan Crain
Gayle Davis & Fred Kraft
Pat & Julie Donahue
Patricia Flynn
Bob & Heather Garretson
Fund of the CFFMC
Jean C. & Alex H.
Homerberger Fund of the
CFFMC
Erick & Holly Johnson
Rich & Pam Kramer
Brian & Jamie Lang
Caroline & Steven
Mayberry
Mark & Elizabeth Murray
Muskegon Museum of Art
Friends of Art
Newkirk Electric Associates,
Inc.
Susan Rehrer
Paul & Evelyn Reid
Sytsema Family Fund of
the CFFMC

Tyler Sales Co., Inc.
Michael & Patricia Wade
John & Karen Wells
Judith Wilcox
Kenneth & Marguerite
Winter
Jan Witt

Hopper Society (\$5,000+)

Gary & Sue Allore
Joseph & Kris Balaskovitz
Sherry & Stuart Becker
David L. Bishop
John R. Cook in Honor of
Jane E. Leonard and in
Memory of Ruth E. Cook
John & Kathy Dahlstrom
Anne & Allen Dake
Jan Deur & Laura Weaver
Deb DeVoursney
Eugene Fethke
Robert & Sue Fles
Charitable Fund
Shirley J. Gossett in Honor
of Ronald R. Gossett
Matt & Amy Heisser
Greg & Debi Hillebrand
Pat Hunt
Paul & Karen Jackson
Tom & Pat Johnson
Roger & Jeanne Knop
James & Betty Korbecki
Jerry & Alison Lang
Larry & Lynne Larsen in
Memory of Huguette Y.
Fisher
Mark & Bonnie Meengs
Susan W. Meston
Dan & Sharon Moody
The Noble Family
Foundation in Memory of
Al & Edna Noble
Emma & Frank Peterson
Fund of the CFFMC
John & Michelle Pridnia
Evan & Lois Reinders
Eric & Michele Ringelberg
Don & Elizabeth Jane
Rohlck
Mike & Debra Schubert
Shoreline Insurance
Agency, Inc.
Dr. F. Remington & Ginny
Sprague
Peter M. Turner
Kathleen West in Memory
of Jean C. Homerberger
Winberg Construction Inc.
Tom & Jane Witt
Mike & Marti Youngdahl

Benefactor (\$2,500+)

Charlotte & Bob Chessman
Dr. Morton S. Kantor in
Memory of Maxine
Eisman Kantor
Rich & Nan Klassen

Paul & Diane Meyers
MMA Staff
Doug & Jennifer
Morgenstern in Memory
of Richard Morgenstern
Charles & Lureen Mullally
Owen Pyle - Pyle
Foundation
Katie & Cam Roskam
Sand Products Corporation
Michael & Ellen Sepeshy
Josh & Amy Silvis
Jean Stevenson in Memory
of Dr. James L. Stevenson
Ted & Judy Stojak
Kevin & Therese Stone
Marty & Heidi Sytsema
Family Fund of the CFFMC
West Coast pediatric
dentistry
Anonymous

Friend (\$1,000+)

Charles & Gloria Alstrom
Margo Atwell
Stephen & Martha Bartlett
in Memory of Robert &
Veronica Youngman
Christopher & Bethany
Beaman
Sue Bergmans & John
Duplissis
John & Shelley Brocci
Sherry & Pete Brown
Beth T. Carrozza in Memory
of Frank M. Carrozza
Lee S. Brown & Martha
Colburn in Memory of
Kenneth L. Brown
Phillip & Julie Croll
Janet Day in Memory of
John MacLeish Day
Jan & Jim Delaney
Kevin & Sue Donovan
Wallace & Jane Ewing
Charles & Patricia Fisher
Fusion Fluid Equipment
Kirk Hallman & Dawn
Boston
Richard Haslinger
Judy Hegedus
Michael & Mary Hendon
Barbara & John Hermanson
Charles & Sarah
Hermanson
Cornelia A. Holley
Rick & Holly Hughes
Peggy Jensen & Gerald
Nehra Fund of the CFFMC
Sylvia Kaufman
Gregg & Mary Keeton
Heather Kettler
Tricia Lamiman
Clara Lang
Cindy Larsen
David & Suzanne Lowe
Barbara Potter MacMeekin
Tim & Marian Michalski

Roger C. & Michelle M.
Morgenstern
Jared & Catherine Mott
Gordon Mudler
Ken & Marilee Otto
Joe Panici & Rick Murak
John & Susan Noling
Rev. William Randall
John & Marilyn Ruck
Laura Schultz
Shafer Family Fund of the
CFFMC
Thomas & Lynne Spencer
John J. & Sheila G. Steffel
Alan Steinman
Bonnie Stuk
Judith Tierney
Julie VandenHeuvel
Phillip & Loraine
Vander Pol
Harry & Julie Wierenga in
Honor of the Amazing
MMA Team
Eleanor K. Williams
Roy Winegar & Barbara
Klingenmaier
Susan Harrison Wolffs
Douglas & Jennifer
Zwemer

Under \$1,000

Jason Aerts & Anne
Schroeder
Larry & Sandy Austin
Amy B. Bensingher
Bridget Bontrager
Ronald & Eve Boston
Billie Bruce
Joanna & Mike Buboltz
Robert & Lizbeth Burns
Ann Burroughs
Penny Carpenter
Curtis Chambers
George & Deborah
Chmelar
Nancy Chudacoff in
Memory of Bette
Wolfgang Fisher
Monica Collett
Santiago & Nancy
Coronado in Honor of
Bennette Freeman Hartz
Steven & Darleen Dangel
Violet K. De Wind
John Derbin & Barbara
DeLello Derbin
Steve & Cynthia Deupree
Charles R. Deupree
Jon & Linda DeVooagd
Tige Dickinson
George & JoAnn Dornbus
Leonard & Cathy Drust
Dynamic Conveyor
Corporation
Bob & Ann Erler in Memory
of Shirley Van Hoeven
Timothy A. Farmer

Cont...

EXPANSION CAMPAIGN CONTRIBUTORS, *cont...*

Jack Frick
Glenn & Alice Gambel
Laurel Geis & Nicholas Myers in Memory of Virginia Geis
Terry & Janet Grevious
Stanley & Judy Hale
Daniel M. Hamblin
Ellen Hanley
Merle & Linda Hanson
Nicholas Huryk
Dee Jasick
Steve Johnson & Jean Chambers
John & Lesa Jordan in Memory of Fran Green
Brian & Gwyn Kainulainen
Trish Kochka in Memory of Al Kochka
Rhea & Neal Kupisz
Robert & Denise Kwiecień
Howard & Joyce Leroux
Nelson Levings
Pat Linck
Arend & Nancy Lubbers
Andy & Jill Maciejewski
Donald R. Matthews
Patrick & Shelia Miller
MMA Docents in Memory of Carol Folkert
Rich Nelson in Memory of Mary Lee Read
North Holiday Hills Book Club
Cara O'Brien & Chester Winowiecki
Betty J. Ohs
Linda & Tom Olson in Memory of Gwendolyn Sievert

Richard Oman & Jennie Naffe
Jane Otrhalek & Tonya Rund
Kathleen & Stephen Parker
William & Erika Paulson
Dave & Chris Pequet
Eric & Marisa Peterson
Lauren Phillips
Irene Pierson
Martha Pinsky
Andrew & Tracy Price
William & Maura Reynolds
Harry & Carol Schmidt
Robert & Marcia Schneeberger
Patricia Schroeder
Ed & Pat Schroeder
Robert T. Sheardy
James Skipper
David Stapel
Marian Stevens in Memory of Cornealja (Cora) Bos Frans
Joan & Marsha Stewart
Suarez/Polakis Family Fund
Amy Conn Tenny
Robert Timmerman
Annalise Vander Weit
Jeanne & Don VanWieren
Elsa & Walter Verderber
Mary Jo & Warren Westenberg
Mary Westhoff in Memory of Richard J. Westhoff
Jonathan & Melissa Wilson
Mary Wisnom
Anonymous



MMA Executive Director Kirk Hallman announcing Museum Expansion Campaign

MEMBERS

CORPORATE & FOUNDATION

Inspire (\$10,000+)

ADAC Automotive
AGS Company
Elmer L. & Eleanor J. Andersen Foundation
The Bold Companies
Community Foundation for Muskegon County (CFMC)
DTE Energy Foundation
Fifth Third Bank
Frey Foundation
Grand Haven Area Community Foundation
Harbor Steel
Hines Corporation
Hooker DeJong Inc.
Howmet Aerospace Inc.
Paul C. Johnson Foundation
JSJ Foundation
Lorin Industries
Loutit Foundation
Meijer, Inc.
Marian A. & Ruth K. Sherwood Family Fund
Robert D & C. Corcoran Tuttle Fund of CFMC
Van Kampen Boyer Molinari Charitable Foundation
Shaw & Betty Walker Foundation
Warner Norcross + Judd LLP
West Shore Urology, PLC

Benefactor

Fifth Third Bank
Independent Bank
Jackson-Merkey Contractors, Inc.
The Meijer Foundation
Motion Dynamics Corporation
Nichols Paper & Supply
Raymond James & Associates, Inc.
Sidock Group, Inc.

Patron

Bishop Heating and Air Conditioning
Hearthstone Bistro
Huntington Bank
Northern Machine Tool
Northern Trust
PNC Bank
Rehmann
Shape Corporation
Swanson Pickle Co., Inc.
Sytsema Funeral & Cremation Services

Friend

Annis Water Resources Institute
Applebee's Muskegon
Beacon Recycling
City of Muskegon

CMC Design
Comerica Bank
Conrad Machine Co.
Consumers Energy Foundation
Core Realty Partners
Delta Hotels by Marriott
Edward Jones
EMBARK Financial Partners
Frame & Mat Shop
Fusion Fluid Equipment
G & L Chili Dogs
Gary Nelund State Farm Insurance
Gielow, Groom, Terpstra & McEvoy, PLC
Ginman Tire Co.
Grand Valley State University
Gunter Accounting, Inc.
Hank's Tavern
Hurst Mechanical
James Jackson Museum of African American History
John Grace Company
LakeShore Custom Cabinets
Lakeshore Museum Center
Le Fleur Shoppe
The Lewis House Bed & Breakfast
Medendorp Real Estate Group
Muskegon Area Intermediate School District
Muskegon Community College
Muskegon Public Schools
Muskegon Surgery Center
New School
Revel
Schuitema Moving
Service 1 Federal Credit Union
Shoreline Insurance Agency, Inc.
Single Phase Electric, Inc.
Smith Haughey Rice & Roegge
Soils & Structures, Inc.
St. Paul's Episcopal Church
Summit LawnCare & SnowPlowing
Sun Chemical Corp.
Tridonn Development
Tyler Sales Co., Inc.
The Village Baker
Village of Rosy Mound
Waddell & Reed
Webb Chemical
West Coast Pediatric Dentistry
West Michigan Dock & Market
West Michigan Law, P.C.
Westwind Construction
WinBerg Construction Inc.

INDIVIDUAL

100 Year

Patrick O'Leary

Lifetime

Judith A. Hayner
Sylvia C. Kaufman
Chris McGuigan
Jean Veiga

Inspire (\$10,000 +)

Marilyn Andersen
Curtis Atkisson
William Baldrige
Stuart & Sherry Becker
Frank & Susan Bednarek
Bernie & Cathy Berntson
Jon & Jane Blyth
James W. F. & Donna K. Brooks
Darlene Collet
John Cook & Jane Leonard
Donald & Nancy Crandall
Lowell & Nell Dana
Janet Day
Edgar A. DeJong & Diane Van Wesep
Jan Deur
Pat & Julie Donahue
Valerie P. Eggert
Floyd & Caron Farmer
Frances F. Fisher
Robert & Ruth Fountain
Mike & Bonnie Gluhanich
Kimberly L. Hammond
Judy Hayner & Char Romanosky
Matt & Amy Heisser
Larry & Roxanna Herder
John & Linda Hilt
Dorothy A. Johnson
Erick & Holly Johnson
Trip & Nina Johnson
Charles E. Johnson II & Vivian Keene Johnson
Robert & Wendy Kersman
Roger & Jeanne Knop
Dan & Sheryl Kuznar
Brian & Jamie Lang
Jane Leonard
John & Jessie Martin
Jack H. Miller
Daniel & Sharon Moody
Thomas & Suzanne Munroe
Mark & Elizabeth Murray
Patrick O'Leary
Steve & Deb Olsen
Michael & Kay Olthoff
Richard W. & Nancy Peters
Margaret Potter
Paul & Evelyn Reid
Don & Jane Rohlck
Patricia Roy
Jean Scales Pataky
Michael & Debbie Schubert
Roger & Jan Spoelman
Don & Jane Tjarsen

Julia Tuttle
Thomas & Elizabeth Tuttle
Anthony & Monica
Verplank
Mrs. Shaw Walker
Jim & Susan Westgate
Judy Wilcox
Kenneth & Marguerite
Winter
Chris & Stephanie Witham
Richard & Marilyn Witham
Jan Witt
Michael & Martha
Youngdahl
Anonymous

Hackley Guild

Patricia Flynn

Ambassador

Shirley Gossett
Skip & Joy Lothmann
Mark & Bonnie Meengs
Tim & Jane Stoeper
Judith Van Kampen
Jerry & Roxie Westgate

Benefactor

Mark & Kristina Clark
Orville & Susan Crain
Gayle Davis & Fred Kraft
Brad & Lori Doriot
William C. & Mary Lou Eyke
Mark & Christine
Fazakerley
Laurie Hekman
Amy Hosford
Paul Howland
Steve & Deb Jackson
Mark & Karla Lange
Jim & Karen O'Neill
Eric & Michele Ringelberg
John & Marilyn Ruck
Jack & Becky Slimko
I. John & Kathleen Snider
Jon & Sue Thompson
Daniel & Barbara Weikel

Patron

Karen Bednarek & Paul
Gillan
Kay Bernard
R. Drummond Black &
Katherine Jawor
Peter & Sherry Brown
Lee Brown & Martha
Colburn
Don & Kathy Dahlstrom
John Derbin & Barbara
DeLello Derbin
Tracy Dobson & Oscar Kent
George & JoAnn Dornbos
Tom & Carolyn Fehsenfeld
Robert & Sue Fles
Frank Galante & Paula
DeGregorio
Gary & Deborah Goode
Mary Anne Gorman

Don Holtrop & Phyllis
Monte Holtrop
Richard & Holly Hughes
Jason & Susan Jespersen
Juanita R. Joiner
Morton Kantor
Liz Kennedy
Ray & Jacquie Kiefer
Erika King & Robert
Beasecker
Joan LaMourie
Jane Lane
Charles Matthews &
Juanita Kay Cater-
Matthews
Henry Matthews & Tim
Chester

Steve & Caroline Mayberry
LeighAnn Mikesell
Ken & T.J. Norris
Garry & Charlotte Olson
Gary Oxendale & Federico
Figueroa
Robert C. Packer, M.D.
John & Michelle Pridnia
Owen Pyle & Penny Sage
Terry & Patti Quanstrom
Susie Rehrer
John L. & Diane M. Revitte
David Roodvoets
Michael & Ellen Sepeshy
Vance H. & Deborah Smith
Joan & Marsha Stewart
Ted & Judith Stojak
Tom & Liz Trzaska
Phillip & Loraine
Vander Pol
Laura Sue VanHoesen
Daniel & Nancy Weller
John & Karen Wells

Friend

Richard & Marilyn Aardsma
Dan Achterhoff & Bonnie
Hendrick
Cindy Ackerman
Alan & Anna Alpert
Charles & Gloria Alstrom
Holly Alway
Wes & Jean Anderson
Ted & Francine Anton
Mary M. Appelt
Harry & Lori Arthur
Jeff & Dawn Auch
Mary Anne Bacon
Robert & Sue Baglien
Joseph & Kris Balaskovitz
Ric & Marilyn (Marti)
Balgooyen
Stephen & Martha Bartlett
Jackie Bartley
Gary & Carol Beatty
Steven Bennett &
Dr. Elaine Melotti Schmidt
Thomas & Vickie (Vita)
Bergers
Paul & Joan Bergmann
Lee & Dawn Berry

John R. & Claudia L. Berry
David L. Bishop
William & Susan Bissell
Scott & Carla Blinkhorn
Chris & Sally Bonter
Philip A. Brady
Jim & Janet Brainard
Beth Brandt
Elizabeth Brandt & Blair
Rieckmann
Gary & Nancy Brezinski
John F. & Shelley A. Brocci
James W. & Jane T. Brown
Dana & Claudia Bryant
Mike & Joanna Buboltz
Andy & Beth Buelow
Gordon & Mary Buitendorp
Richard Bullington
Cindie Burr
Bert Butts
Manuel & Barbara Butzow
Daniel & Annette Byers
Maureen Campbell
Gunnar & Normajeane
Carlson
Penny K. Carpenter
Robert & Charlotte
Chessman
Nancy Chudacoff
Jane Cirona
Adam & Lauren Colburn
Tom & Carol Cousineau
Phillip & Julie Croll
William W. & Carol Cross III
Allan & Anne Dake
Steve & Darleen Dangel
Jackie Danielson
Mary Danigelis
Larry & Jan Dean
Darlene DeHudy & Lloyd
Lemmen
Jim & Jan Delaney
Steve & Cynthia Deupree
Roni Devlin
Tom DeVoursney
Kent & Carole DeYoung
Keith Downie & Katherine
Bourdon
Herbert & Karen Driver, Jr.
Bruce & Esther Drukker
Len & Cathy Drust
Robert & Cathleen Dubault
Dennis & Suzanne Dudley
Albert & B. Jeane Dugan
Robert Eichelberger
Angie & Danielle Eliopoulos
Rae Jean Erickson
Timothy & Anne Erickson
Wallace & Jane Ewing
Jill Farkas
Martha Ferriby & Roger
Rapoport
Chase Fetterley
Charles & Patricia Fisher
Carol Foerch
Ken & Barbara Foster
Jeff & Lee Ann Frame
Collin Fry

Bob & Heather Garretson
Jeffrey Gates
Evelyn Geile
James & Susan Geisler
David & Judy Gingras
Arthur & Mary Ann Golin
Elana T. Graham
Cary & Kelly Grant
Sandra Green
Paula J. Greene
Patricia Groessl & David
Leonard
Steven & Diana Groters
Kaaryn Gustafson
Kelsey Hakeem
Bill & Lynn Hall
Kirk Hallman & Dawn
Boston
Daniel M. Hamblin
Gordon & Mary Jo Haskins
Diane Haworth
Mike & Deanna Hayes
Susan Headen
Michael & Mary Hendon
Edwin Hendrickson &
Debra Brown Hendrickson
Kelli Hepler & Michael
Karp
Keith & Diana Hicks
Kurt & Antoinette Hildwein
Bobbie Hilleary
Debra Hillebrand
Martin & Nancy Hillila
Mark Hills & Kathryn Baum
Jeanne Hines & Joseph
Auffrey
Erin Hoffman
Roger & Paula Hoffman
Susan Holkeboer
Stephen & Susan Holmes
Bruce & Donna Hood
Robert & Kathy Hoogstra
John W. Hornacek
David & Dina Horne
Dan & Jane Horton
Frank & Ann Hughes
Beverly Hundley
Charles & Susan Huttula
Jose' & Sue Infante
Bryan & Meg Jennings
Peggy Jensen & Gerald
Nehra
Samantha Jewett
Bari Johnson
George & Charlotte
Johnson
Rhyan Johnson
G. Thomas & Patricia
Johnson III
Steve & Carla Jolman
Stephen & Andrea Kahn
Elizabeth Kara
J. Gregg & Mary Keeton
Kris Kelley
Frank & Diane Kennedy
Jack & Martha Ketchum
Heather Kettler
John & Rhonda Kinahan

Roberta King & Mike
Miesch
Margaret Kivinski
Richard & Nancy Klassen
Justin & Kathleen
Kleaveland
Tom Knight
Alan Kohley
R'na & Kara Komarek
Paul R. Korndorfer
Rich & Pam Kramer
Diane Krasnewich & Tim
Trainor
Thomas & Sally LaBaugh
Denise Lachniet
Kathy Lachniet
Scott & Donna Lachniet
Paul & Patricia Ladas
William & Mary Beth
Lahrman
Monica Lakatos
Tricia Lamiman
Jack & Helene Landon
Gay Landstrom
Wayne & Irene LaPointe
Cindy Larsen
Larry & Lynne Larsen
Steve & Brenda Leafers
Will & Keeley Lent
Howard LeRoux
James & Elizabeth
Lieberman
Susan Love
Doug & Bonnie Lowe
TL & Karen Lowe
Mitzi Luttrull
William & Lois Lydens
Jon & Joy Lyle
Lois Lynch
Jim & Gale MacBride
Barbara Potter MacMeekin
Stephen & Carolyn
Madden
Lawrence Declan Madden
& Chatdanai Pongpatipat
Ray & Kathy Maffet
Judy Maggini
Mary Malek
Kimberly Malone
Joseph Manhart
Art & Karen Martin
Kathy Martin
Cynthia Mazurek
Ron & Irene McDermed
R. Paul & Winifred
McNergney
Terence Mercer
Rick & Sandy Meyer
Tim & Marian Michalski
John & LaShelle Mikesell
Patrick & Sheila Miller
Roger & Jane Missimer
Kimberly Montgomery
Cambria Moran
Roger C. & Michelle M.
Morgenstern
Jared & Catherine Mott
Gordon Mudler

MEMBERS, cont...

Mark Mulder	Phillip Sterling & Jane Wheeler	Christa Barnell	Julie Cutler	Ann Healey
Neil & Diane Mullally	Jean A. Stevenson	Lisa Bayne	Maggie Dannemiller	Rena Hesselink
Mike Muskovin	Bonnie Stuk	Beth Beaman	Roberta Dardi	Carolyn Hill
Scott & Janee' Musselman	Julie Sullivan	Ashlae Beliste	Merris Davis	Maggie Hill
Hester Newton	Frank Sundquist	Marjorie Bell	Carolyn J. DeBoer	Karen Hillebrand
Eileen A. O'Brien	Marty & Heidi Sytsema	Susan Bergmans	Linda Decker	Sally Hipp
Elmer Ogg	John & Sue Sytsema	Renee' Berndt	Janet Delphia	Dollie Hippchen
Kenneth & Katherine Olthoff	David R. & Linda Taylor	Beth Beyerl	Eleanor Dennis	Marc Hoeksema
Patti Opel & Tim Norris	Scott & Katie Teichmer	Mary Bigney	Peggy DePersia	Ronace Hogan
Henry & Sharon Ottens	Peter & Judy Theune	Mardi Billinghamurst	Mary Derrickson	Frank Hollister
Steve & Molly Parker	Tim & Rita Thill	Mary Bishop	Jeri Devlin	Enid Holly
Howard & Janice Paulson	Jane Thomasma	Carrie Blackmon	Larry DeVoogd	Eileen Hoogterp
Lynn Penning	Jimmy Tomczak & Katelyn Wollet	Isabel Blake-Evans	Mary Dewys	Wally Hook
Frank & Emma Peterson	Jane Toot	Nancy S. Bly	Richard Dirrickson	Joyce Hoolsema
Jon Peterson	Mary Towner	Bill Boelkins	Collin Dinsmoor	Sheila Horning
Sally Peterson	Susan Tufts	Kathleen Boeschstein	Diana Dinverno	Tracy Host
Veronica Petty & Steve Bawks	Peter Turner	Nichole Bogue	Travis Dodge	Marcia Hovey Wright
David & Beth Pickard	Kathi Tyler	Jannette Bole	McKenzie Doriot	Evangeline Huesen
John Planteroth	Mary Tyler	Heidi Bolema	Mary J. Drueke	Beverly Hulbert
Lawrence & Jane Podolak	Stephen & Valerie Vallier	Linda M. Bolton	Harold Dunlap	Nancy Hulka
Roy & Britta Portenga	Nicholas Van Zanten & Sara Schwartz	Bridget Bontrager	Nancy Duran Homik	Joy Hulst
Martha Porter	Julie VandenHeuvel	Betsey Borden	Darcy Dye	Tracie Hutson
Aaron & Lisa Potts	Janda VanDyke	Jill Borden	Kathleen Dykema	Elizabeth Hwacinski
Mike & Sue Poulin	Don & Jeanne VanWieren	Clare Bourne	Jeanne Earley	Jeanne Hyma
Amanda Lynn Pretzer	Michael & Patricia Wade	Deborah Bowen	Lois Ege	Michele Irmischer
Judy Rahrig	Debra Walters	Dennis Boyd	Deborah Ellis	Donna Iverson
John & Char Ratchford	Annie Wassmann & Tom Edwards	Judy Bregman	Sarah Emmerson	Karen Jackson
Susan Reck	Jordin Weber	Doug Brehm	Kristopher Engel	Betsy Jellema
Paul & Diane Reeths	Carol Wetterhahn	Daniel K. Breunsbach	Michael Erickson	Janet Johnson
Evan & Lois Reinders	Tom & Donna Whitehead	Heather Brewer	Donna Esch	Judith A. Johnson
Sheila Reinecke	Harry Wierenga	Anne Bridges	Ben Evans	Martha Johnson
James Reucki	Jerry & Jill Wiersma	Lacy Bridges	Marian M. Fagan	Patricia G. Johnson
Suzanne Richards	Darrell & Pam Wieten	Lois Brinks	Patricia Fast	Rebekah Johnson
John & Linda Riepma	Richard & Priscilla Wilcox	Jan Brock	Cathleen Feyt	Cindie Jones
James & Debra Rinck	Mary Wilkos	Vicki Broge	Darlene Fielstra	Heidi Jones
Marvin & Christine Robere	Brent & Kelsey Williams	Beth Brown	Denise Fishell	Mary C. Jones
Colleen Rockey & Craig Christilaw	Eleanor Williams	Robert C. Brown	Kenneth H. Fisher	Jeffrey A. Justin
Evin & Lisa Rodkey	Paul A. Wright	Jill Buchholz	Roberta S. Fleischmann	Barbara A. Kartes
Jeffrey & Marjorie Rosen	Rita Ann Wright	Shirley Buikema	Mary Fountain	Julie Kastl
Craig Rozelle	Greg & Jill Young	Connie Bull	Megan Fox	Pamela Kearney
Glenn & Cortney Rutkauskas Jr.	Tom Zant	Nancy Burton	Lora French	Peppy Keat
James M. Rynberg	Debra Zare	Allison Bush	Jean Karen Freye	Jim Keating
Nancy Ryatina	Robert & Joanne Zayko	Marilyn Cagle	Kelly Fuller	Bonnie Kellogg
J Arthur & Velma Sanders	Diane Zoellmer	Judy Canfield	Michael Galvin	Susan Kellogg
Sue Savoie & Ellie Hegedus	James & Linda Zolman	Cynthia Carlton	Diane Gauthier	Linda Kestner
Chip & Susan Sawyer	Member + Guest	Beth Carrozza	Virginia Gearhart	Earlaine Kiel
David Scheidegger	Shirley Albers	Nora Carson	Tom Gerst	Jennifer Kirk
Brook Schiller	Neven Allan	Marilyn Case	Nancy Gher	Christine Klaes
Frank & Patricia Schramm	John R. Allen	Beverly Cass	Janet Giberson	Susan Kleaveland
Paul & Bonnie Schranz	Helen Allshouse	Curtis Chambers	Cheryl Giller	Gloria Klinger
Laura Schultz	Fran Altman	Rachel Champayne	Kimber Glenn	Debra Knapp
Patti Sevensma	Deborah Anderson	Judith Chiriboga	Carol Goergen	Mary A. Knoll
Bill & Toni Seyferth	Kay Anderson	Judith Chiriboga	Eric Gollannek	Jackie Koehler Berry
Ken Sherburn	Valerie Anderson	Ryan Christensen	Cassandra Gomez	Rita Kohrman
Karen Shields	Marilyn Armbruster	David Clark	Heather Goss	Mary Koller
Barb Shulienberger	Nancy Armitage	Elizabeth Clark	Phyllis Graham	Jeffrey Kommit
Josh & Amy Silvis	Margo M. Atwell	Jeff Clark	Sheila Grant	Virginia Krautheim
Alex G. & Mary Kay Simon	June Au	Linda Clark	Joanne Greenert	Gary Krenz
Gregg & Sue Slager	David Baas	Ruth Clark	Cheryl Gurden	Susan Kruszynski
Elizabeth Smith Kara	Denise Babcock	Amy Clay	LaDon Gustafson	Ann Kufra
Thomas & Lynne Spencer	Cindy Backstrom	J'nai Closz	Pamela Hall	Kenneth Kutzel
Jim & Sheila Steffel	Leon Bakke	Joanne Cochrane	Julie N. Hallisy	Cheryl Lake
Alan Steinman	Carol Ann Balcom	Jon Colburn	Jill Hamilton	Mary Bernardine Lane
		Carolyn Coleson	Tim Hamlin	Clara Lang
		Lynn Comried	Helga Hamm	Lee LaPointe
		Janice Conn	Amy Hancock	Karen Larnard
		E. Jane Connell	Merle Hanson	Phyllis W. Laurin
		Mary Cooper	Lynn Hauser	Phillip M. Lebednick
		Shirley Cull		

Mary Esther Lee
Duane Leet
Kim Lemmen
Carole Lende-Svec
Francine Lessard
Karen Locke
Penelope D. Loeb
Noel A. Long
Sheila Long
Susan Lumley
Michelle Lundborg
Rita Lundell
John Luttrull
Mary Lou Maher
Carolyn R. Marcus
G. Lynette Marks
Jordan Martin
Karen Martin
Laura Martin
Donald R. Matthews
Connie McAllister
Marilyn McCann
Catherine McClung
Sue Ellen McCreary
Paula McDowell
Susan McElfish
Judith McIntyre
Gwyn McKay
Ann McLaughlin
Susan Meston
Lisa Metzdorf
Anna Jane (A.J.) Meyer
Kimberly Meyer
Paul Meyers
Jean S. Miller
Richard Miller
Becky Moteski
Kimberly Moon
Michelle Morrison
Richard G. Morrison
Reini Moser
Suzanne Moynihan
Barbara A. Mullally
Charles Mullally
Julie Myrme
Kristi Nagengast
Victoria Neiderheide
Bonnie Newman
Deborah Newson
Linda Noble
Brad Nyeholt
Cara O'Brien
Hadley O'Brien
Jeanne O'Brien
Kathleen O'Brien
Dawn Ochsner
Paula O'Connell
Joann C. Odneal
Linda Gay Olson
Elizabeth Oppawal
Trish Ostberg
Terry Osterhout
Merilee Otto
Amber Oudsema
Madison Page
Nicholas Palmer
Bonnie Palutke
Peggy Panici

Skeeter Parkhouse
Jennette Parquette
Alice Pasarela
Zoe Pearson
Kelley Peel
Sharon Pell
Ardis M. Peters
Richard Peterson
John D. Phillips
Lauren Phillips
Velma Phillips
Beth Pierson
Margaret Plichta
Margaret Poort
Leila M. Poppen Reynolds
Ingrid Porritt
Debbie Potter
Brittney Previe
Hannah Rector
Jane Reens
Monica Renico
Cindy Ribesky
Joy Richmond
Linda Riehl
MaryAnne Ritters
Laurie Robillard
Patricia Robinson
Ellen Rockwood
Kathy Rogers
Karen Rollins
Joan Rudolph
Donna Ryan
Fred A. Rybik
Martha (Marty)
SanClemente
Chris Sanden
Mary Schafer
Susan Schilleman
Marla Schindler
Mary L. Schmiedeknecht
Mechelle Schneider
Ashley Schnotala
Lydia Scholle
Phillip Schott
Mark Schrier
Patricia Schroeder
Sue Schuiteman
Sally Schwartz
Asaline Scott
Barbara Scott
Karen Seifert
Sally Seith
Patricia Shafer
Elaine Shay
Robert T. Sheardy, Jr.
Betty Shedd
Loretta Sheehan
Laura Sheehy
Julie Shook
Joanne Sikkenga
Bonnie Slayton
Hayden Smith
Corrie Snoeyer
Tracy Sodini
Dianne S. Solesby
Vinka Soljan
John Sorenson
Pete Spatocco

Robin Spicher
Leslie Sprott
Florence Stahl
Deborah Stakenas
Jillian Stevenson
Linda M. Stewart
Julie Stivers
Heidi Stofferahn
Janice L. Stone
Katie Stout
Nancy Strait
Linda Strong
Renate Strothmann
Judith Swanson
Sandy Swartzentruber
Gloria Switzer
Terri Szesny
Sally Tardani
Priscilla Taylor
Loretta Temple
Michael L. Theisen
Bernie Thomas
Crystal Thomas
Richard Thornton
Laura Thurlow
Judy Tierney
Susan Tindall
Laurie Tober
Warren Trimble
Mariann Tsilis
Jerilynn Tucker
Mary Ullmer
Lynne Unger
Eileen Urbanski
Constance Vallier
Mary Ann Vallier
Thomas Van Bemmelen
Toni Van Dyken
Connie Vandekoppel
Sandra VandenHeuvel
Anna Mae Vander Woude
James C. Vander Woude
John VanderHaagen
Darlene VanderKolk
Harriet VanderMeer
LaVon Vanderploeg
Claudia Vanderstelt
Cary VanderVeen
Phyllis VanderWeele
Nancy Vanderwest
Betty Vandewater
Barbara VanHeest
Wendy VanWoerkam
Anita Varela
Janice Veenstra
Victoria Veenstra
Suzanne Velarde
Elsa Verderber
Rolina Vermeer
Lori Vickers
Cindy Vogel
Sheila Wahamaki
Phyllis Wahlberg
Kenneth Walcott
Erin Walling
Sara Warber
Stephen C. Waterbury
Ashley Watkins

Jean Weirich
Nancy Wells
Kathy West
Julie Westmaas
Sharon Whalen
Sally Whitbeck
Daniela Whitenack
Dee Whittaker
Andy Wible
Deborah Wickingering
Marcia Wiersma
Liz Wilder
Mary Will
Mary Ellen Willcox
Jane L. Willea
JoAnn Windberg
Sandy Winger
Susan Wink
Elizabeth Winter
Nancy Wittkopp
Liz Witzler
Barbara Wood
Mary Workinger
Lisa Wurst
Vicki Wynne-Parry
Christopher Yetman
Kurt Yost
Amy Young
Bernadette M. Young
Catherine Young
Sue Young
Chelsea Zielinski
Lorraine Zimmer
Charlene Zoet

Household
Sally Adama & Charles
Deupree
Ross & Sandra Aden
David & Margaret
Alexander
Jeffrey & Sydney Alward
Ian & Veronika Anderson
Leonard Anderson &
Wanda Gringhuis
Anderson
Tim & Cheryl Arter
Dennis & Mary Aten
John & Janet AusterMiller
Larry & Sandy Austin
Alex & Jillian Baauw
Tim & Cathy Baker
Gerald & Barbara Bakker
Ronald & Sherri Lee
Balaskovitz
Jerry & Dawn Bancuk
Jeff & Maggie Bandstra
Michael & Sharon Banka
Martino Bartoli & Beth
Davis
Brent & Helena Beacom
Allen & Sandy Beck
Steven A. & Debra A. Beck
Paul & Grace Benedict
Matt & Abby Berkey
James & Jo Bidle
Kenneth & Pamela
Billmeier

James Birckbichler &
Kathleen Woznick
Peter & Susan Blackburn
David C. & Sandra R. Bliss
Ethan Charles Blocher-
Smith & Lindsay Flegge
Brian & Jill Boersema
Jack & Valerie Boet
Janet Bohac & Linda Goss
James & Debra Boismier
Dan & Alexis Bolthouse
Michael & Jillian Bolthouse
Daniel Bonner & Dolores
Trese
Randy & Karen Booth
James A. & Linda Bos
Austin & Brooke Bottorff
John & Andrea Bowyer
Jacqueline Britzen & Bill
Reek
Michael Brower & Alana
Matyas-Brower
George & Edythe Brown
Ronald & Nan Bruskotter
Janet Brzezinski & Claud
Mills
Robert & Beth Burns
Jeffery & Kim Burr
Tom & Susan Byrnes
Greg & Amy Cammell
Roger & Kristin Carter
Richard & Mary Church
Jim & Lisa Clark
Doug Clarke & Cathy
Brubaker-Clarke
Steve & Susan Clay
Don & Mei Ling Clemens
John & JoAnne Clickner
Dennis & Kathleen Cobler
Justin & Melanie Coburn
Kristen Collee & Marc
VanderStelt
Mike & Deb Collett
Tony & Sue Cortese
Brenden Crawford & Matt
Lorentz
Marguerite Curran-Straubel
& Dudley Straubel
Adam Dahlstrom & Cody
Westendorf
Peter Damm & Terry
Hughes
Howard & Thea Datema
Ben & Corey Davis
William & Kathy DeBone
Ara & Dona Demirjean
Steven & Kathleen Demos
Ray & Barbara Bell
Dereske
Jon & Linda DeVoogd
Dianne DeYoung &
Michael Schrock
David Dietrich & Mary Jo
Thies Dietrich
Derek & Allison Dile
Chad & Marisa Doane
Michael & Nancy Dodge

MEMBERS, *cont...*

Doug Doering & Sally Dunn
 Kevin & Sue Donovan
 John Drees & Deborah Chrystal
 Rachel Drelles & Michael Janiga
 Ed & Judith Elsey
 Joel & Linda Engel
 Robert & Jackie Engel
 Robert & Ann Erler
 Dale & Susan Ertzinger
 Mark & Kathy Evans
 Brian & Natalie Fedewa
 Tom & Margaret Feldt
 Greg & Mia Fick
 Ross Field & Jean Lewis
 James & Jacqueline Fisher
 Jacqueline Fisher & Susan K. Rose
 William & Judith Fleener
 Julio & Tammy Flores
 Scott & Lori Florida
 Gerald & Mary Foley
 Darriel & Erica Fox
 Troy & Natalie Fox
 Carl & Christine Franzon
 Nick & Kari Freye
 Robert & Yvonne Friel
 William R. & Patricia J. Fritz
 Stewart Fritz & Hillary Berry
 Tom & Mary Jo Galetto
 Richard & Jodie Galosy
 Richard & Adde Lou Garter
 Thomas & Marisue Garzelloni
 Carl & Carol Gebuhr
 William & Katherine Gietzen
 Christopher & Patti Gilson
 Glenn & Lynn Glaser
 Patrick & Adrienne Gordon
 John & Martha Gork
 Jeremy & Joanna Graham
 Marvin Grahn & Christine Hauke
 Patricia Grant & Jennifer Marsh
 Octavia & Adrian Graur
 Jack & Ruth Grenell
 David & Linda Gritter
 Dave & Kate Habetler
 Glenn & Janice Hafele
 Richard E. & Diane M. Harder
 Angela Hardy & T.J. Strickland
 Donald & Victoria Hare
 Craig & Deb Harris
 Matthew & Katrina Harter
 Barry & Rochelle Hartsema
 Margaret Haynes & Bruce Froelich
 Jim & Julie Hegedus
 Harold Hering & Janice Lewis
 Charles & Sarah Hermanson
 John & Barbara Hermanson
 Jerry & Carol Herrendeen
 Mark & Jennifer Hickmott
 Robert Hill & Garry Post
 Raymond & Jackie Hilt
 Stephen & Margaret Hoffman
 David & Mary Hogan
 Kenneth & Maria Hoopes
 James & Linda Horan
 Doug & Judy Hostetler
 Edgar Hunt & Nancy McCarthy
 Paul E. & Cheri J. Inglis
 John & Annette Jack
 Joel & Kathleen Jarvis
 Dee Jasick & Kevin Spencer
 Paul & April Jendrasiak
 Leigh & Maureen Johnson
 Mildred & Angela Johnson
 Rebecca Johnson & Donovan Cater
 Patricia Jones & Kim Smith
 John & Lesa Jordan
 Brian & Gwyneth Kainulainen
 Michael & Melissa Keller
 Richard & Barbara Kelley
 Robert & Mary Kendall
 James & Paula Kendra
 Jack Kennedy & Lynne Gordon Kennedy
 Ed & Edie Kessler
 John & Kathleen Kling
 Norman & Lynn Knopf
 Jon & Judy Koenig
 Kurt Kohtz & Bernadette Kronberg
 Marc & Colleen Kole
 James L. & Betty Korbecki
 Jerry & Marlene Koster
 Mark & Sandra Krecic
 Kent & Charlotte Krive
 Robert G. & Amber C. Kumpf
 Pete & Mimi Kunz
 Bob & Denise Kwiecien
 Keith & Iva Kwolek
 Joe & Janet Labiak
 Bern & Dana Lahart
 Bryan & Jessica Lambert
 Robert & JoAnn Landman
 Jerry & Alison Lang
 Richard Laubach & Gina Lorentz-Laubach
 Scott & Sean LaVelle
 Diane Le Blanc & Naomi Rhein
 Sarah L. Leybourne & Brian Bouman
 Louis & Diane Lincoln
 Mildred Lindland & Catherine Lindland Young
 Tom & Jackie Lindrup
 Jack & Marcia Lipps
 Richard & Caroljean Locke
 Daniel & Nancy Lori
 David & Suzanne Lowe
 Bill & Kenna Loxterman
 Doug & Sui Malear
 Jim & Jill Marcusse
 Don Martines & Margaret O'Toole
 George & Rosemary Matchell
 Robert & Jean Ann McCann
 Raymond McLeod & Melanie Meade
 Thomas McNabney & Suzanne VanPelt
 Jenny McNeill & Cavan Berry
 Eric & Jill Meulenberg
 Luky & Carol Michaelides
 Eva Miller & Matt Parrott
 Jon & Jan Mink
 Bill & Cindi Mitchell
 James & Tina Mitchell
 Adam & Amanda Moblo
 Ryan & Andrea Montgomery
 Ryan & Andrea Montgomery
 Mat & Carol Moore
 Bill & Missy Morrow
 John & Lisa Mulder
 John & Barb Mullally
 Dave & Kathy Myers
 Tom & Lucia Nalley
 Marvin & Connie Nash
 Sam & Joan Nedeau
 Dale & Connie Nesbary
 Linda B. Nicely & Daniel Burlingame
 Joseph G. & Dena G. Kronczak
 Ruth & Kara Olson
 Richard Oman & Jennie Naffie
 Steve & Kathy Ongert
 Gary & Deana Packeringham
 Larry & Gretchen Page
 Mike & Ellen Pallasch
 Richard & Martha Pardini
 Brad & Melissa Patterson
 Thomas & Susan Peoples
 Jim & Megan Perreault
 Eric & Amber Petersen
 Pat Picard & Judy Smith
 Rich & Nancy Piersma
 Donald & Barbara Poel
 Edward Polakis & Kim Suarez
 Hal & Betty Porter
 Gary & Beth Post
 Gerald & Marilyn Postema
 Denis & Barbara Potuznik
 Tim & Pam Prosch
 John Field Reichardt & Kenneth Wright
 Richard & Patricia Reider
 Kathryn L. Repta & Diane Lapinski
 Margaret Richardson & Catherine Sliwinski
 M. Gary & Pennie Robertson
 Charlene & Julie Rogers
 Thomas & Lynn Rohlf
 Bobbie Rosencrans & Angie Hoogterp
 Ty & Erica Ross
 Jack & Lois Rozdilsky
 Tonya Rund & Jane Otrhalek
 Greg & Penny Russick
 Timothy & Marilyn Ryan
 Stephen & Kathleen Samuelson
 Fred & Joan Sanderlin
 Mandi & Kari Santos
 Peter & Rochelle Sartorius
 Mike & Cathy Saunders
 Tom & Kathy Sayles
 Mike & Lisa Schanhals
 Mel & Carol Scherpenisse
 Eddy Schmitt & Susanne Werblow
 Robert & Marcia Schneeberger
 Don Schneider & Jean Chin
 Steve & Gwynne Schoff
 Ben & Marilyn Schramski
 Paul Schreur & Greta Dejong
 Carl & Debra Schuitema
 Larry & Jan Schutt
 C. Greg Scott & Jane M. Clingman Scott
 David & Sue Selim
 Michael & Ammy Seymour
 Jocelyn Shaw & Doug Hannink
 Paula Shay & Ben Bunker
 Peter & Janice Shireman
 William & Kathy Siningler
 Donald L. & Karine Siplon
 Theodore & Phyllis Sirotko
 Peter & Regina Sjoberg
 Tom & Jamie Smith
 Lyle Smith & Ann Wamser-Smith
 Margo Sodini-Johnson & Greg Vandenberg
 Jim & Nancy Solon
 F. Remington & Virginia Sprague
 Paul & Mary Springer
 Joshua & Ericka Springstead
 Michael & Barbara Stapleton
 Chad & Rachel Staudacher
 Tim & Jeri Staudacher
 Jean Stein & Thomas Pascoe
 John & Kathleen Stephenson
 Chris & Maurene Stock
 Kevin & Therese Stone
 Ronald & Lynn Stroup
 Brian & Karyn Sullivan
 Verne & Janet Sutherland
 Michael & Carol Sutton
 Alan & Jerri Teelander
 Ken Terpstra & Ken Bandstra
 William D. & Mary J. Thompson
 Thomas & Elizabeth Tindall
 Jim & Patti Townsend
 Lawrence & Christina Triezenberg
 Clark L. Twining & Cynthia Bates Twining
 Jim & Kristine Tyler
 Janet Tyson & John Fulton
 Bill & Bev Uetricht
 Tom & Gina VanBruggen
 Ken & Mary Ann Vandenberg
 Bruce & Willy Vanderkooi
 Chip & Colleen VanderWier
 John & Elsa VanHekken
 Helga & Tonya Villarruel
 Michael & Sarah Volker
 Vila & Shanti Wagle
 William & Shirley Walther
 Warren & Arlene Wickland
 Wendel & Michelle Wickland
 Stephen & Janice Williford
 Jonathan & Melissa Wilson
 Roy Winegar & Barbara Klingenmaier-Winegar
 Daniel & Barbara Witt
 Scott & Julie Witte
 Jon & Cathy Workman
 Duane & Laurie Wright
 Jim & Gail Wurtz
 Bruce & Cheryl Wyma
 Dave & Mary Jane Yacavone
 Rogue & Vickie Ybarra
 Larry & Maryjane Zadonick
 Kyle R. & Susan Zemke
 Gregg & Barb Zulauf
 Douglas & Jennifer Zwemer

Individual

Cynthia Abraham
 Christine Adams
 Zachary Anderson
 Ralph Annunziata
 Dee Arnold-Johnson
 Brad Aspey
 Linda Baird
 Stephanie Barras
 Margaret M. Bart
 Ilse Baughman
 Debra Beattie-Dahlquist
 Jim Bedell
 Kerri Bennett
 Nataly Hopper Berckmann
 Darlene Bergren
 Tasha Bibbs-Oakes
 Darlene Blasing

Larry Blovits
 Gordon Boardman
 Susan Boehme
 Lynne Boezaart
 Sam Booker
 Jean Allemeier Boot
 Bonnie Borgeson
 Diann Bartnick Borton
 Brent Bouchard
 Gregory Briggs
 Richard Brinn
 Gayle Bristah
 Billie Bruce
 Mike Bryant
 Sheryl Budnik
 Sondra Burnham
 Ann Burroughs
 Lauren Butkevich
 Christine Cannon Bucher
 Rosemary Cary
 Diana Casey
 Louis Churchwell
 Lonnie Clark
 Victoria Clifford
 Nancy Clouse
 Diana L. Coleman
 Diana Cornell
 Gail Cornell
 Jeanne Cotner
 Marlan Cotner
 Bonnie Cowles
 Roberta Cramer
 Cynthia Cutler-Awrey
 Patricia Dee
 Bette DelVecchio
 Joyce Downing
 Henry Droski
 MaryAnn Dunn
 Mary E. Dykema
 Sy Ellens
 Shelly Engel
 Corrinne Erickson-Strand
 Pascual Escareno
 Sarah J. Fellin
 Eugene Fethke
 Carla Flanders
 L. Doris Foster
 Gregory Frye
 Paul Gallagher
 Alice Gambel
 Marcia Garrigan
 Laurel Geis
 Florris Gerling
 Cindy Gillard
 Chris Giroux
 Donald Goodman
 William Grant
 Jennifer Green
 Ruth Grinbergs
 Toni Rae Gurn
 Jean Haase
 Edward Hall
 Martha Hall
 Sharon Hanba
 Ellen Hanley
 Janet A. Harestad
 Susan Harrison Wolffis
 Brian Haskins

Dee Hatcher
 Laurie Hedman
 Judy Hegedus
 Thomas Hegewald
 Dona Hettle
 Neil Heyen
 Ora Lee Hines
 H.L. Hoermann
 Susan Horsfall
 Cornelia A. Holley
 Lindsay Isenhardt
 Marcia Howe
 Mary Ann Howe
 Pat Hunt
 Bill Iddings
 Lindsay Isenhardt
 William Jacobks
 Kwame Kamau James
 Sandra Jensen
 Jonci Jensen, ND
 Dale R. Johnson
 Nancy Reagh Johnson
 John Kadelsik Jr.
 Mary Therese Kendra
 Vandalee Knoll
 Trish Kochka
 Betty Ruth Krause
 Corene Kufta
 Barbara Langlois
 Cindy Larson
 Hunter Lee
 Pamela Lewis
 Susan Line
 Helen Percy Lystra
 Joan MacMeekin
 Elisabeth Major
 Marla Major
 Angela Maloy
 Rosalie Mancier
 Deborah Margules
 Jim Markle
 Lisa Martin
 Bruce Maxwell
 Michele May
 Patrick C. McCabe
 Joseph P. McDaniel
 Doug McEnroe
 Susan McGuire
 Shirley McIntire
 Maxine J. McLean
 Linda Miller
 John Moore
 Thomas Muller
 Mary Jill Mundt
 Carol Myers
 Kathleen Neal Reat
 Rich Nelson
 Susan Newton
 Marian D. Nisper
 Bill O'Brien
 Shannon Osborn
 Mary Ann Page
 Jeanna Paluzzi
 Kathy Parker
 Geralyn Pasi
 James W. Perry
 Irene Pierson
 Kyra Pikowitz
 Chris Pospisil



Caterina Holt (center), branch manager for exhibition sponsor Raymond James, and guests at the opening of *Rising Voices 2: The Bennett Prize for Women Figurative Painters*

Elsa Presentin
 Mary Price
 Sally Purchase
 William Randall
 Ricardo Reyes
 Joan G. Richmond
 Richard Riopelle
 Pat Rolf
 Maria Rooks
 Sally Rose
 Joni Rosen
 Anita Rosenberg
 Marilyn Rottschafer-Andriese
 Jill Sanders
 Abigail Sawin
 Miriam J. Schaafsma
 Tom Schaub
 June Schmelzer
 Carol Brauer Schmidt
 Carolyn M. Schneider
 Nicki Schneider
 Ruth Schofield
 Joy Schroeder
 Janet Schultz
 Joanne Schwalm
 JoAnn Sciba
 Thomas C. Scott
 Janice Sieplinga
 Joan H. Smith
 Althea M. Stevens
 Jane Stibitz
 Jessica Stong
 Gail Taggart
 Thelma L. Temple
 Scott Timmer
 Thomas Toebe
 Thomas Tomasek
 Ann Trowbridge

Richard Vallier
 Lesa VanSingel
 Kyle Vohlken
 Carol Voigts
 Paul R. Voss
 Gary Walker
 Susan Walters
 Janet Watkins
 Michael Wells
 Gail Werner
 Carol A. Wininger
 Linda Wood
 Jane Wright
 Yvonne "Dianne" Wright
 Sara Youngman
 Susan Zimmerman

FUNDRAISING EVENTS

THANK YOU, EVENT UNDERWRITERS

2020 FESTIVAL OF WREATHS

The Muskegon Museum of Art transformed Festival of Trees into Festival of Wreaths for the 2020 holiday season. The event incorporated a new Wreath Walk event that took the holiday spirit outside and downtown with designer wreaths in the windows of over 40 downtown shops, restaurants, and attractions, along with a display at the MMA. A Raffle Wreath and online auction of the wreaths raised revenue and an outdoors Hot Cocoa Hop and Food Drive on Small Business Saturday amped up the festive feeling with helping to fill Harbor of Grace food pantry shelves.



Photo of window wreath by LaShelle Mikesell

PRESENTING UNDERWRITER



CO-SPONSOR



EVENT SPONSORS



EVENT SUPPORT



Frank & Susan Bednarek
Sherry & Pete Brown
Roni K. Devlin
Robert Kendall – Kendall Investment Group
ProFab/Bauer Sheet Metal
Peter & Regina Sjoberg
Ted & Judy Stojak
Anonymous

WREATH SPONSORS

B & D Lawncare
Belasco Electric Co., Inc
Jon & Jane Blyth
Brian & Jill Boersema
Core Realty Partners, LLC
Custom Cove Carpet & Tile
Dobry Law Offices, PLC
Downtown Muskegon Business Improvement District
DTE Energy Foundation
Dynamic Conveyor Corporation
Family Financial Credit Union
G&L Chili Dogs
Graphics House
Harbor Steel
Hazekamp Premier Foods
Hines Building – West End
Hines Corporation
Howmet Aerospace

Huntington Bank
John Grace Restoration/Construction
Nina Johnson, M.D., PC.
LightCorp
Mart Dock
Muskegon Surgical Associates – General Surgery
Muskegon Surgical Associates – Hand Center
Muskegon Surgical Associates – Plastic Surgery
Muskegon Surgical Associates – Pure Medical Spa
Muskegon Surgical Associates – Vascular Surgery
Northland Insurance
Steve & Deb Olsen
Pliant Plastics
Quality Tool & Stamping
Ramos & Sons Auto Body & Towing
Shoreline Insurance Agency
Dr. F. Remington & Ginny Sprague
Rev. Eileen Stoffan
The Cheese Lady
Timber Run Associates, LLC
Mary Towner
Dr. Lynne Unger
Waddell & Reed – Jackie Engel, CFP®
Warner Norcross + Judd LLP
WinBerg Construction, Inc.



Hot Cocoa Hop Food Drive donations

2021 ON TAP & UNCORKED

Our seventh annual ON TAP event originally planned for April 2020 had to be postponed twice, once in 2020 and then in 2021. Sponsors that were already in place for the 2021 date will generously support the event in 2022.

PRESENTING UNDERWRITER



SPONSORS



109TH ANNIVERSARY GALA

The Anniversary Gala usually held in June, and typically a sold-out event, is one of the year's biggest parties and a significant fundraiser. For enhanced safety, this year's Gala was held in Hackley Park on August 28, 2021. Sponsors signed on early to help support the MMA in the months leading up to the event.



2021 Star Award Winner Billie Bruce with her husband Royal Bruce

Photos by Jennifer Green Photography

HONORARY CHAIRS

KIMBERLY VAN KAMPEN & MICHAEL CROOK

PLATINUM SPONSORS

Consumers Energy Foundation
 Core Realty Partners
 Howmet Aerospace
 Dan & Sheryl Kuznar
 Mart Dock
 John & Jessie Martin
 Muskegon Area Intermediate School District
 John Pridnia – Rehmann
 Smith Haughey Rice & Roegge
 Swanson Pickle Co.
 Peter M. Turner
 Warner Norcross + Judd LLP

PRESENTERS



Chuck & Vivian Johnson

GOLD SPONSORS

Susan & Frank Bednarek
 Fund of the Community
 Foundation for Muskegon County
 Jon & Jane Blyth
 Chuck & Pat Fisher/
 Jerry Wiersma & Jill Gantos
 Grand Valley State University
 Muskegon Area Intermediate School District
 Muskegon Community College

CO-PRESENTERS



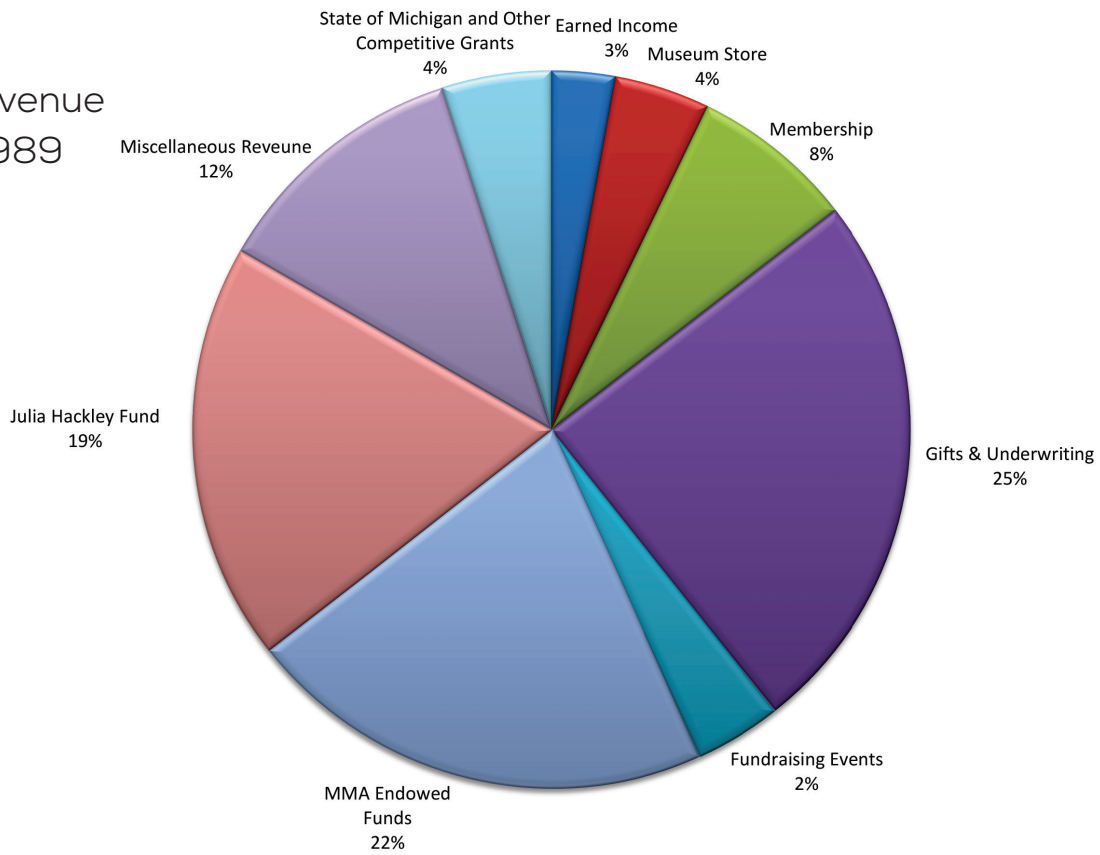
EMBARK Financial Partners
 Patrick O'Leary & Karen Yamasaki

SILVER SPONSORS

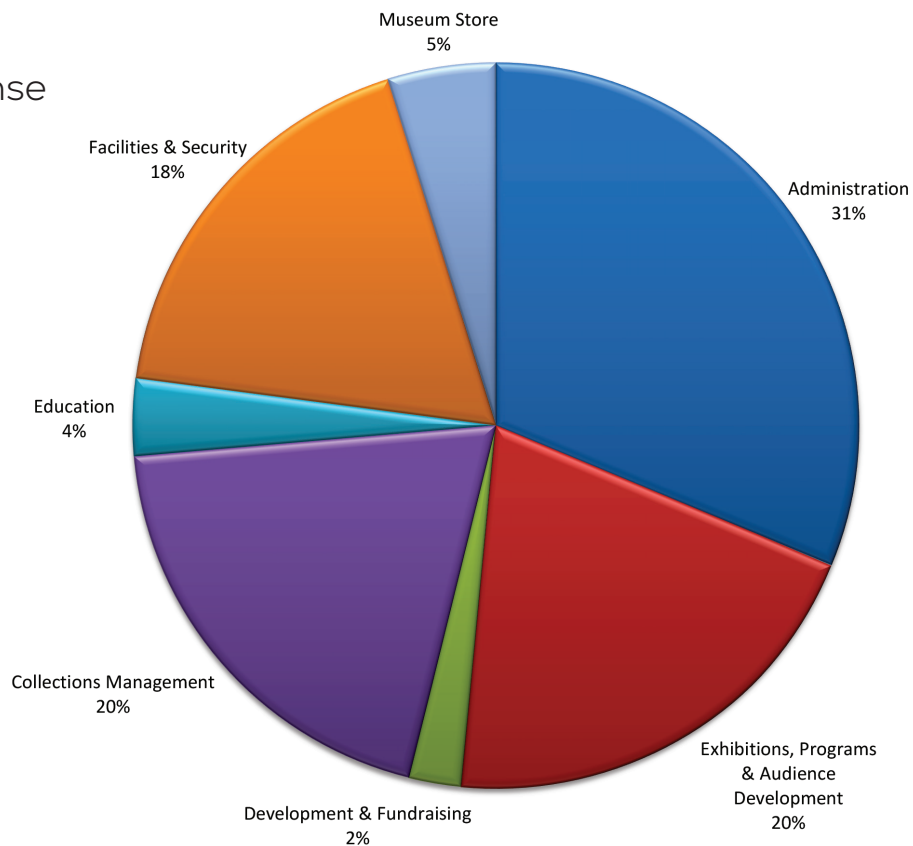
Susan & Frank Bednarek
 Fund of the Community
 Foundation for Muskegon County
 Erhardt Construction
 Gay & Brian Landstrom
 Shoreline Insurance Agency

2020-2021 Operations

Total Revenue
\$1,658,989
[Pre-Audit]



Total Expense
\$1,343,397
[Pre-Audit]



2020-2021 numbers

109	Years of Operation
1,459	Members
42	Docents
43	Wreaths in Festival of Wreaths
5,183	Artworks in the Permanent Collection
9	Full-time employees
18	Part-time employees
60	Artists represented in Museum Store
11,689	Facebook followers (up 20% over previous year)
2,982	Instagram followers (up 34% over previous year)
3,833	E-Newsletter subscribers (up 32 subscribers over previous year)
103	Videos on MMA YouTube channel
\$10,223,241	Raised to date for Museum Expansion Campaign



Photo by LaShelle Mikesell

VOLUNTEERS

Without all of our volunteers—Board Trustees, docents, greeters, event hosts and servers, clerical and research assistants, event organizing committees, and more—we could not do what we do.

Thank you!

MOST VOLUNTEER HOURS

Erin Walling

90-100 HOURS

Margo Atwell
Kim Montgomery
Suzanne Selim
Erin Walling

50-89 HOURS

Frank Bednarek
Al Burton
Charlotte Chessman
Lesa Jordan

25-49 HOURS

Claudia Berry
Nancy Crandall
Robert Dubault
Bill Fritz
Mary Ann Golin
Charles 'Trip' Johnson
Margaret R. Kivinski
Tricia Lamiman
Karen Larnard
Charlotte Olson
John Pridnia
Lois Reinders
John Swanson
Jonathan Wilson
Susan Young

MUSKEGON MUSEUM OF ART

296 W. Webster Ave.
Muskegon MI 49440

231.720.2570 | muskegonartmuseum.org

The Annual Report is an annual publication of the Muskegon Museum
of Art. | VOL. 8, Issue 1

NON-PROFIT ORG.
U.S. Postage
PAID
Permit No. 78
Muskegon, MI

2020-2021 ANNUAL REPORT

Charles E. Burchfield (American, 1893-1967); *Steel Mill Homes (Blast Furnace)*; watercolor on paper/board, 1919
Museum Purchase, Gift of the L.C. and Margaret Walker Fund. 2020.7

